



# HENRY KENDALL HIGH SCHOOL

## **YEAR 11**

# **ASSESSMENT POLICY AND SCHEDULE**

## **2023**

*Updated: 16 December 2022*

## Contents

<b>POLICY ON ASSESSMENT PROCEDURES .....</b>	<b>1</b>
<b>THE HIGHER SCHOOL CERTIFICATE.....</b>	<b>1</b>
<b>ELIGIBILITY FOR THE HIGHER SCHOOL CERTIFICATE .....</b>	<b>1</b>
<b>THE HIGHER SCHOOL CERTIFICATE CURRICULUM - PATTERN OF STUDY (APPENDIX A).....</b>	<b>2</b>
<b>UNITS OF STUDY .....</b>	<b>2</b>
<b>ASSESSMENT POLICY .....</b>	<b>2</b>
<b>1. GUIDELINES ON THE NUMBER AND TYPES OF TASKS BEING USED .....</b>	<b>4</b>
<b>2. PROCEDURES TO ENSURE STUDENTS ARE INFORMED IN WRITING OF THEIR ASSESSMENT SCHEDULES.....</b>	<b>5</b>
<b>3. PROCEDURES RELATING TO THE ADMINISTRATION OF TASKS .....</b>	<b>6</b>
<b>4. PROCEDURES RELATING TO MALPRACTICE .....</b>	<b>9</b>
<b>5. GUIDELINES FOR MAINTAINING SECURE RECORDS OF ALL MARKS AWARDED FOR ASSESSMENT TASKS AND ENSURING THE SECURITY OF MAJOR WORKS.....</b>	<b>11</b>
<b>6. PROCEDURES FOR PROVIDING ASSESSMENT MARKS FOR STUDENTS WHO TRANSFER INTO THE SCHOOL AFTER THE COMMENCEMENT OF THE COURSE .....</b>	<b>11</b>
<b>7. PROCEDURES FOR DEALING WITH THE ASSESSMENT OF ACCELERANTS AND ACCUMULANTS .....</b>	<b>12</b>
<b>8. RECOGNITION OF PRIOR LEARNING.....</b>	<b>12</b>
<b>9. AWARDING MARKS FOR AN ASSESSMENT TASK AND PROVIDING FEEDBACK TO STUDENTS ON THEIR PERFORMANCE IN TASKS AND THEIR PROGRESS .....</b>	<b>12</b>
<b>10. PROCEDURES FOR ADVISING STUDENTS IN WRITING WHEN THEY ARE IN DANGER OF NOT MEETING ASSESSMENT REQUIREMENTS IN A COURSE .....</b>	<b>14</b>

11. PROCEDURES FOR CONDUCTING SCHOOL REVIEWS OF FINAL ASSESSMENT MARKS AND APPEALS TO NESA .....	16
12. COMMUNICATING THE POLICY .....	17
13. HSC ALL MY OWN WORK .....	18
14. EXPULSION.....	18
ANCIENT HISTORY .....	19
BIOLOGY .....	20
BUSINESS STUDIES .....	21
CHEMISTRY .....	22
COMMUNITY & FAMILY STUDIES .....	23
DRAMA .....	24
ENGINEERING STUDIES .....	25
ENGLISH ADVANCED .....	26
ENGLISH EXTENSION I.....	27
ENGLISH STANDARD .....	28
ENGLISH STUDIES.....	29
GEOGRAPHY .....	30
PRELIMINARY HOSPITALITY- FOOD & BEVERAGE STREAM.....	31
INDUSTRIAL TECHNOLOGY TIMBER .....	32
LEGAL STUDIES.....	33
MATHEMATICS ADVANCED .....	34
MATHEMATICS STANDARD .....	35

<b>MATHEMATICS EXTENSION.....</b>	<b>36</b>
<b>MODERN HISTORY .....</b>	<b>37</b>
<b>MUSIC 1.....</b>	<b>38</b>
<b>PERSONAL DEVELOPMENT, HEALTH &amp; PHYSICAL EDUCATION.....</b>	<b>39</b>
<b>PHYSICS.....</b>	<b>40</b>
<b>PRELIMINARY – PRIMARY INDUSTRIES – AGRICULTURE .....</b>	<b>41</b>
<b>PRELIMINARY RETAIL SERVICES .....</b>	<b>42</b>
<b>SOCIETY &amp; CULTURE.....</b>	<b>43</b>
<b>SOFTWARE DESIGN &amp; DEVELOPMENT.....</b>	<b>44</b>
<b>SPORT, LIFESTYLE &amp; RECREATION .....</b>	<b>45</b>
<b>VISUAL ARTS .....</b>	<b>46</b>
<b>WORK STUDIES .....</b>	<b>47</b>
<b>PATTERN OF STUDY REQUIREMENTS CHECKLIST FOR THE 2023 HIGHER SCHOOL CERTIFICATE.....</b>	<b>48</b>
<b>NESA REQUIREMENTS FOR HSC .....</b>	<b>49</b>
<b>BOOKLET ACKNOWLEDGEMENT .....</b>	<b>50</b>
<b>ASSESSMENT CALENDAR .....</b>	<b>51</b>
<b>ASSESSMENT TASK CHECKLIST .....</b>	<b>52</b>
<b>ASSESSMENT TASK.....</b>	<b>54</b>
<b>CHANGE TO LISTED ASSESSMENT TASK DETAILS.....</b>	<b>56</b>
<b>MISSED ASSESSMENT TASK.....</b>	<b>58</b>
<b>EXTENSION OF ASSESSMENT TASK.....</b>	<b>59</b>

APPLICATION FOR SPECIAL CONSIDERATION .....	60
APPLICATION FOR SPECIAL CONSIDERATION FOR YEAR 11/ HSC COURSE .....	60
ASSESSMENT TASK.....	60
EXAMPLE OF STATUTORY DECLARATION .....	61
USE OF COMPUTER TECHNOLOGY GUIDELINES.....	63
VET RECOGNITION OF PRIOR LEARNING .....	64
APPLICATION FOR RECOGNITION OF PRIOR LEARNING (RPL) AND/OR CREDIT TRANSFER WITHIN STAGE 5 OR STAGE 6 VET COURSES.....	72
APPENDIX M    'N' WARNING FLOWCHART .....	83
'N' AWARD W ARNING LETTER .....	84
ACADEMIC IMPROVEMENT PROGRAM .....	85
STUDENT APPEAL.....	86

# POLICY ON ASSESSMENT PROCEDURES

## THE HIGHER SCHOOL CERTIFICATE

The Higher School Certificate is the highest educational award you can gain in New South Wales schools.

The Higher School Certificate is governed by the *Education Act 1990* (NSW), which sets out the general requirements you need to meet to be awarded the Higher School Certificate.

NSW Standards Education Authority (NESA) administer the Higher School Certificate.

## ELIGIBILITY FOR THE HIGHER SCHOOL CERTIFICATE

The rules and requirements for eligibility are set out in the NESA publication, the *Assessment, Certification and Examination (ACE) Manual*, which is kept in every secondary school. It is also on the NESA's website: <https://ace.nesa.nsw.edu.au>

To be eligible for the award of the Higher School Certificate you need to have:

- Gained a RoSA or such other qualifications as the NESA considers satisfactory.
- Attend a government school, an accredited non-government school, a school outside New South Wales recognised by NESA or a college of TAFE.
- Satisfactorily completed courses that comprise a pattern of study required by the NESA for an award of the Higher School Certificate (see below)
  - Completing the requirements for each course, including any necessary practical or project work
  - Completing tasks designed for the internal assessment program in each HSC course at your school
- Sat for and made a serious attempt at the Higher School Certificate examinations.
- Students must satisfactorily complete a Year 11 pattern of study comprising at least 12 units and an HSC pattern of study comprising of at least 10 units. Both patterns must include at least:
  - 6 units from NESA Developed Courses.
  - 2 units of a NESA Developed Course in English.
  - Three course of 2 unit value or greater (either NESA Developed or NESA Endorsed).
  - Four courses.

## **THE HIGHER SCHOOL CERTIFICATE CURRICULUM - Pattern of Study (Appendix A)**

### ***NESA Developed Courses***

NESA Developed Courses are the courses for which NESA develops a syllabus, setting out the objectives, outcomes, structure and content. NESA also develops Higher School Certificate examinations for most of these courses.

### ***NESA Endorsed Courses***

- School-designed Courses – These are courses developed by individual schools in response to local interest or need and endorsed by the NESA.
- Content Endorsed Courses (CECs) – These fall into two categories: general CECs and VET CECs including many delivered by TAFE.

All NESA Endorsed Courses count towards the Higher School Certificate and are listed on your Record of Achievement. However, NESA Endorsed Courses do not count towards calculation of the ATAR.

## **UNITS OF STUDY**

Most courses offered for the Higher School Certificate have a 2 unit Year 11 and a 2 unit HSC component. Each unit requires approximately 60 hours of classroom study per year.

VET courses are not divided into Year 11 and HSC components and may be counted as Year 11 or HSC courses.

Some 1 unit courses are also offered as NESA Endorsed Courses HSC extension courses.

Extension study is available in English, Mathematics, History, Music, some Languages and some VET courses. Extension courses build on the content of the 2 unit course, and require students to study beyond the 2 unit course.

## **ASSESSMENT POLICY**

### **Rationale:**

The Henry Kendall High School Assessment Policy is divided to align all faculty tasks to ensure that assessment process and procedures are consistent across the school to support student engagement, task completion and improve student outcomes. Students are issued the schedule by Week 4, Term 1 to commence their Year 11 year. Students will sign an acknowledgement form upon receipt of the schedule (Appendix B).

**Policy Format:**

The Henry Kendall High School Policy is divided into the following sections and numbered for ease of use:

1. Guidelines on the number and types of tasks being used
2. Procedures to ensure students are informed in writing of their assessment schedules
3. Procedures relating to administration of tasks
4. Procedures relating to malpractice
5. Guidelines for maintaining secure records of all marks awarded for assessment tasks
6. Procedures for providing assessment marks for students who transfer into the school after course commencement
7. Procedures for dealing with the assessment of accelerants and accumulants
8. Awarding of marks for an assessment task and providing feedback to students on their performance in tasks and their progress
9. Procedures for advising students in writing when they are in danger of not meeting assessments requirements in a course
10. Procedures for conducting school reviews of final assessment marks and appeals to NESA
11. Communicating the policy

## 1. Guidelines on the number and types of tasks being used

### 1.1 Minimum number of tasks for each course

Mandatory requirements from NESA for the Year 11 courses are as follows:

- **Three tasks** including minimum and maximum task weightings. Minimum task weighting is 20% and maximum task weighting is 40%.
- Mandatory course components and weightings
- The number of formal written examinations to be used for formal assessment. In most courses, only one formal written examination can contribute to a formal assessment program in Year 11. In Year 11 this will be the end of course examination scheduled at the end of term 3.
- Any mandatory task types.

No Assessment Tasks are to run within two weeks of Trial Examinations. Assessment Tasks scheduled after the Trial Examinations must have approval from the Senior Executive.

VET courses will be assessed accordingly and referenced against RTO Assessment Schedules. Students can not be recorded as competent for a unit of competency until all assessments for that unit of competency are demonstrated or successfully complete.

### 1.2 Types of assessment tasks

Assessment task type should vary in nature, be a combination of in class (IC) and hand due date/hand in (HI), and reflect outlines specific to the course syllabus documents. Assessment in the form of exams must not exceed the recommended percentage of overall assessment weighting as outlined in course syllabus documents. Only **one** formal examination can contribute to a student's assessment.

A formal assessment task may contain more than one part. The task notification should detail the requirements for each part, including that all parts are to be submitted and/or completed together with a single due date.

A task that has parts, with multiple due dates spanning weeks or months, is not a single formal assessment task. Such tasks are separate individual formal assessment tasks, each with their own weighting. Each task is to be represented separately in an assessment schedule and each will contribute to the maximum number of tasks allowed for the course.

## Appendix C – assessment schedule for 2023

### 1.3 Adjustments to Assessment

Adjustments to assessment need to be considered for the following:

- To allow students with special education needs access to and participation in assessment.
- Adjustments must be made so students can demonstrate what they know and can do.
- Adjustments need to be considered in the areas of the assessment process, assessment activities and response formats.

## **2. Procedures to ensure students are informed in writing of their assessment schedules**

### **2.1 Procedures to plan the scheduling of tasks in a coordinated way**

Faculties must develop assessment schedules for every year group to complement programming scope and sequence documents prior to the commencement of a new academic year. Assessment schedules must be reviewed throughout the year by the Head Teacher, and available for audit by the Senior Executive. Faculty members maintain a responsibility to ensure that they are aware of relevant assessment schedules and apply these within published timeframes.

All Year 11 faculty assessment tasks will be placed in the Variation of Routine book and on the electronic school calendar on SENTRAL at the beginning of each term, so staff are aware of student workloads throughout the year and can plan excursions and extracurricular activities accordingly. The Administration Officer and the Deputy Principal (Curriculum) will monitor this process.

Appendix C outlines the summarised assessment schedule for the Year 11 HSC course.

### **2.2 Using the Stage 6 Assessment Task Check List (Appendix D)**

At the beginning of each term the Deputy Principal (Curriculum) publishes the planning timeline for task checking. The task check list must be attached to the front of each Assessment Task pro forma and submitted to the Head Teacher prior to the task notification distribution to students. The teacher and Head Teacher is to complete the bottom section and sign and date the check list. At least two weeks before task distribution this completed document is then submitted to DP Curriculum for checking and sign off. No Year 11 assessment task should be printed or distributed until the Head Teacher and DP Curriculum has signed the authority to do so. The check list, and task copy, should be filed in the appropriate monitoring folder, and a copy retained in the DP Curriculum office.

### **2.3 Informing students and parents about tasks (Appendix E)**

Students are provided with printed assessment schedules for each course in Stage 6. Assessment schedule reminders are to be included as a regular publication in the school newsletter. Head Teachers from each faculty are responsible for providing this information to the front office for every newsletter publication deadline.

On the commencement of senior course studies students in Stage 6 will sign for an assessment schedule booklet with all assessment schedule details for every course. Students will sign an acknowledgement of receipt register when receiving this booklet. This register is to remain on file with the Deputy Principal (Curriculum). Stage 6 assessment booklets will be uploaded to the school website.

Students will be informed in writing for all formal assessment tasks. All assessment task notification in all years must utilise the Henry Kendall High School Assessment Notification form. Notification is to be provided a minimum of two weeks prior to task completion/submission. In Stage 6 students are to sign receipt of assessment notification. These records are to be maintained by the course teacher in the relevant monitoring folder. If there is a change to the published assessment task details, students will be required to sign a notification of change form **(Appendix F)**

### 3. Procedures relating to the administration of tasks

#### 3.1 Providing adequate notice for tasks

A minimum two weeks written notice is required for all formal assessment tasks. As students may be absent on the day that a task is issued, it is strongly advised that staff issue tasks well before the minimum two week notification date.

#### 3.2 Signing for receipt and submission of tasks

In Stage 6 all students are required to acknowledge receipt for all formal assessment tasks by signing and dating the Assessment Notification Form. When submitting their completed work, students are required to sign and date this same register a second time.

#### 3.3 Students absent from school when assessment information is given out

If a student is absent the day of assessment task notification, it is their responsibility to see their teacher to receive the notification. Students will know when task notification must be provided from information outlined in assessment booklets and faculty assessment schedules. In every case, teachers are to issue students with a copy of missed information during the next attended lesson if students fail to meet their responsibilities.

#### 3.4 Submission of tasks

In Stage 6 all hand-in assessment tasks are to be submitted **to the class teacher by 8.55am and signed in,** unless otherwise indicated on the Assessment Task Notice. If the task is to be submitted at an alternative time and place, these must be clearly detailed on the notification.

In the absence of the student's regular teacher, the Head Teacher of the respective faculty can receive assessment tasks and sign them in on behalf of the absent staff member. Tasks should NEVER be left on a desk or table, for future collection by the teacher.

#### 3.5 Teacher absence on the day of a task

In the case of known absence, arrangements can be made with the respective Head Teacher to; reschedule the task, or go ahead with the task depending on task nature.

In the case of unforeseen absence, the respective faculty Head Teacher will decide to reschedule the task, or go ahead with the task depending on task nature.

Note: rescheduling any task must be done with consideration of other faculty assessment schedules.

#### 3.6 Students who hand in work late or are absent from tasks (Appendix G, H, I)

Year 11 students who are unable to attend or submit an assessment task on the due date must contact the school that day by phone and record a message relating to their absence with the front office. Year 11 students will need to complete the appeals process and act in accordance with the Appeals Panel decision.

In Stage 6, students absent from an assessment task or examination will be awarded zero and are required to supply a medical certificate or other documentary evidence such as a Statutory Declaration (**Appendix J**) to cover the absence. It is the student's responsibility on their **FIRST DAY BACK AT SCHOOL** (after task/examination) to make arrangements through the Deputy Principal Curriculum for an extension or Application for Special Consideration in HSC Course to resolve the task. Applications should be made on the appropriate form.

**COVID-19 ABSENCE:** Should a student be absent due to COVID-19 they are required to have evidence of a medical certificate through a tele-conference. If an In-Class (IC) task is scheduled, upon return of the student, completion of the task will be determined by the Head Teacher (Subject) and DP Curriculum.

Support documentation required for illness with COVID-19 and / or COVID-19 isolation for students who are close contacts. Documents are to be ratified at the discretion of the year group Deputy Principal:

- Medical Certificate and/or
- NSW Health RAT registration evidence and/or
- PCR Text notification and/or
- Email notification from parents.

Where a student knows ahead of time that he/she will be absent for a task, (eg; for a family holiday, work placement for VET courses, school sporting activity, course excursion) they must make arrangements prior to the date to complete the task/s at an agreed time. Applications must be made to the Deputy Principal Curriculum on the appropriate form at least ONE (1) week ahead of the date proposed for the task. Where this does not happen, a student will be awarded a zero final mark for the task.

### **3.7 Parent notification of incomplete tasks or failure to submit tasks**

Teachers are to notify parents of incomplete tasks or failure to submit tasks, within two weeks of the official task submission date. Teachers are required to maintain records of this notification on SENTRAL. In the case of Stage 6, teachers are to issue an 'N' warning notification for all assessment tasks that are incomplete or not submitted and appropriate documentation is not received. Head Teachers are responsible for the monitoring of parent notification and documentation.

### **3.8 Prolonged absence**

Students with prolonged absence will be judged on a case-by-case basis, through collaborative consultation between Executive and Senior Executive, to design an equitable individualised assessment plan.

### **3.9 Occasions when zero marks are awarded**

Zero marks will be awarded at the discretion of the HSC Review Panel. Zero marks may also be awarded to students who fail to submit or sit a task and do not submit an appeals form. Zero marks may also be awarded in the event of malpractice.

### **3.10 Invalid tasks / parts of tasks or non-discriminating tasks**

Invalid tasks are tasks that do not directly assess the outcomes intending to be assessed. Non-discriminating tasks are tasks that show no real difference in student ability across a defined body of students. The HSC Review Panel will consider such tasks and determine the appropriate action to be taken.

### **3.11 Special / Disability provisions in examinations**

Regardless of the nature of the special need, the provisions granted will be solely determined by the implications of the student's functioning in an examination situation.

Provisions may include Braille papers, large print papers, use of a writer, use of a reader, extension of test time, rest breaks, use of a personal computer, establishment of a special test centre, exam supervision, individual supervision, permission to take medication, or other provisions as judged appropriate.

Special / Disability provisions are overseen by Head Teacher Student Services in consultation with the school's Learning Support Team and the Senior Executive.

### **3.12 More than one class following the same course**

Common tasks, conditions and marking procedures will be followed in the instance of more than one class following the same course. Assessment tasks in Years 11 and 12 need to be issued at the same time for courses with more than one class. Blind marking, cross class section marking and cross class blanket marking are to be engaged for all year groups where more than one class undertakes a course. Faculties are required to have established processes to accommodate shared marking practices and be able to present faculty processes to Senior Executive if required.

For IC tasks, if there is more than one class timetabled on separate lines, all students will be required to complete the task at the same time.

### **3.13 Tasks due across more than one date**

In cases where task completion is to occur across multiple days, such as an English Speech across the entire year group, every student is required to be prepared for the task completion on the first day of the task, and is required to submit a draft of the task on the first day it is due.

### **3.14 Students undertaking VET work placement**

Mandatory VET work placement is not an unforeseen period away from school. Absence due to VET work placement will not be upheld through the appeals process. Executive responsible for VET, and communications with partnership brokers, will endeavour to ensure VET work placement does not clash with key assessment periods. In cases where clashes with assessments tasks are unavoidable, students are required to plan alternate assessment scheduling with the DP Curriculum. Students need to be reminded of their responsibilities in checking the time of tasks; Decision: if an assessment task is issued prior to work placement, students are required to complete task on return; if notification is issued during work placement, arrangements for completion of task will be made on return.

### **3.15 Technical Failure (Appendix K)**

Technology is not an excuse for inability to complete tasks on the due date. It is the student's responsibility to back up any work in progress and keep hard copies of text. Extensions will be given only with the HSC Review panel agreement, and if the student can provide proof of work completed. The draft work must be submitted on the due date, accompanied by an Application for Special Consideration in HSC Course Form, if any consideration is to be given by the committee. All such cases will be considered individually.

### **3.16 Practical Submissions**

Final submission dates for Year 11 are outlined on the Year 11 assessment schedules. It is an expectation that students are required to provide evidence of development of practical works periodically before the final due date.

Final submission dates for HSC Practical Works to NESA vary between courses. It is the school's expectation that all practical submissions will be between 90% and a 100% complete by the start of term 3.

Students will be guided and monitored in each course in the development of their practical submission for the HSC. Although this guidance will include advice regarding time management, ultimately it is each student's responsibility to work consistently over the twelve month period and ensure that the submission is completed as early as possible. Failure to manage time effectively or to consistently apply themselves to the submissions development may lead to the application of 'N' warnings in that course.

The expectation that HSC practical submissions will be between 90% and a 100% complete by the start of Term 3 is further subject to the Practical Submission Policy of each faculty.

Evidence of progress of work needs to be displayed by students for certification.

## **4. Procedures relating to malpractice**

### **4.1 Malpractice**

Cheating, or malpractice, is dishonest behaviour by a student that gives them an unfair advantage over others. It includes:

- copying, buying, stealing or borrowing part or all of someone else's work and presenting it as their own
- using material directly from books, journals, CDs or the internet without acknowledging the source
- submitting work that contains a large and unacknowledged contribution from another person such as a parent, tutor, coach or author
- paying someone to write or prepare material that is associated with a task, such as process diaries, logs or journals.

### **4.2 Malpractice and the HSC**

The Higher School Certificate is a well-respected and widely recognised educational credential. Cheating undermines the integrity of the qualification.

For many NSW students, the HSC provides a gateway to tertiary studies. This is a pivotal point for many students. Sometimes, due to the pressure students place upon themselves to succeed, some may feel tempted to engage in activities they would not normally consider, such as cheating.

Cheating in the Year 11 and HSC courses is a serious offence. It distorts legitimate measures of a student's achievements. While cheating advantages the individual, it disadvantages other students. In the case of school-based assessment, cheating may affect the order in which students are ranked and distort the moderation process applied to internal assessment marks.

### **4.3 Procedures for dealing with malpractice in tasks**

Suspected malpractice is to be reported to respective faculty Head Teachers for review. If, following consideration by the class teacher and Head Teacher, malpractice is suspected; the matter is to be reported to the Deputy Principal (Curriculum) for investigation.

In straight-forward matters where the malpractice is obvious or the student/s admit to malpractice, the investigation process will be completed by the Deputy Principal (Curriculum). In more complex cases the Deputy Principal (Curriculum) will form the HSC Review panel to investigate the matter and provide a recommendation to the Principal. In all cases the final determination and penalty remains the decision of the Principal.

Students found to have engaged in malpractice may be awarded a zero mark and be required to complete the task again or complete an alternate task at the discretion of the Head Teacher and Senior Executive.

Missing classes to complete tasks: - Students who truant classes to complete assessment tasks will be awarded '0' for the task being completed. Students who truant class to study or prepare for an in class task will be penalised 20% per period truanted.

### **4.4 Procedures for dealing with malpractice in examinations**

Students are to only have materials which are necessary and permitted for the task. Students must not speak to other students from the time they enter the examination room until the time they leave. Students must not behave in a way likely to disturb other students. All electronic devices must be turned off and

placed away from their desk. Students not making a serious attempt to the task, or attempting to plagiarise or cheat, will be subjected to penalty. Students found to breach any examination requirements may be removed from the examination and awarded a mark of zero.

#### 4.5 Strategies for preventing malpractice

Prevention of malpractice is always preferable to dealing with its consequences. There are a number of actions schools can take to help students avoid cheating.

- Henry Kendall High School seeks to ensure that all students understand malpractice and its consequences. All students entered in one or more Year 11 or HSC course must have completed the [HSC: All My Own Work](#) program on the NESA website. This program helps students follow good principles and practices in assessments and exams, and will be completed at the end of Year 10 during the Senior Preparation Program prior to entry into the Year 11 HSC course, or in Year 10 Careers subject.
- Students will be provided with and encouraged to read and understand the NESA's [Rules and Procedures for Higher School Certificate Candidates](#) booklet. 'Honesty in Assessment – the Standard' on page 7 of the booklet is to be highlighted.
- Students must sign a declaration saying that they have read the *Rules and Procedures* booklet. This is an opportunity for the school to reinforce key messages about malpractice.
- Henry Kendall High School aims to design tasks that minimise opportunities for malpractice and include a level of supervision.
- Each course teacher has an obligation to help students with learning how to document and record legitimate assistance. This includes correct referencing, correct acknowledgement of sources and assistance with projects and practical works in accordance with the NESA's documentation for the course.
- The Henry Kendall High School Professional Learning program incorporates inservicing that ensures teachers need to understand the kind of feedback they can legitimately give for school assessment work, and during the development of projects and practical works, so that they can confidently help students without inadvertently contributing to malpractice.

#### 4.6 Strategies for preventing malpractice in work completed out of class time

Strategies to prevent malpractice in work completed outside class time are based on a consistent approach applied across the whole school.

Ensuring students are adequately briefed and feel prepared for the challenges presented by an assessment task should reduce the risk of cheating and malpractice. Teachers are to apply one or more of the following strategies;

- If possible, teachers should allocate class time to planning and drafting an initial response to the task.
- All students are required to prepare annotated references, and/or maintain a process diary/journal, and/or submit original drafts, annotated by the class teacher, with the final copy. All students are required to present work either orally, visually or in writing at key stages of the development process. This work is to be cited by the teacher and records maintained.
- Where appropriate, teachers should consider multiple submission dates to monitor a student's progress.
- Where appropriate, teachers should consider requiring students to develop an action plan with a specific time frame to be signed off as each task is completed. They may need to keep logbooks, journals or reflection statements throughout the development of their projects or practical works. They may be asked to present for a viva voce or to deliver a brief presentation on their progress, which could include submitting their logbooks and discussing the entries.

- Students must understand that components of their projects or practical works that have been written, created or developed by others must be acknowledged in accordance with the NESA's documentation for that course.
- When preparing a brief for any assessment task being undertaken by parallel classes, teachers must develop a shared understanding of the nature and extent of the support they are prepared to provide. At the outset, clearly advise students of the degree of teacher involvement in the development, rehearsal or execution of a work.
- Courses with a submitted project or practical work, such as Design and Technology, Industrial Technology, Visual Arts, Society & Culture and English Extension 2 have special requirements. For example, the teacher and the Principal must state whether they believe the work is authentically the student's work.

## **5. Guidelines for maintaining secure records of all marks awarded for assessment tasks and ensuring the security of major works**

### **5.1 Procedures used for recording assessment marks by the teacher**

Teachers are to record grades in an electronic marks database on SENTRAL and have a printed copy of grades in a central Monitoring folder. Teachers are to also have a copy of printed grades kept in their personal files / rolls in the event of faculty files being misplaced or destroyed.

### **5.2 Procedures used for recording assessment marks for school records**

Assessment marks are to be entered on an electronic marks database on SENTRAL on a regular basis. Management of data entry is at the discretion of the faculty Head Teacher. Printed faculty and individual assessment records are to be available for Senior Executive as required.

### **5.3 Procedures for ensuring security of major works**

Assessment tasks in the form of practical major works (structures, artworks, furniture etc) are to be placed in a secure environment when the student is not working on that major work. A secure environment is one that prevents ready access to the major work by other students and prevents, as best possible, the event of breakage or destruction. The security of major works during transportation to and from school is the responsibility of the student. Procedures for ensuring security of major works are a faculty responsibility and must be available for Senior Executive as required.

## **6. Procedures for providing assessment marks for students who transfer into the school after the commencement of the course**

### **6.1 Procedures for students who enter the HSC course after the commencement of the HSC program**

Students enrolling into a HSC course after the commencement of the HSC program will be assessed and managed on a case-by-case basis. Where possible, student assessment grades will be estimated based on accumulated assessments from HKHS course commencement through to HKHS course completion. In all cases assessment grades and ranks from the student's previous context will be considered when determining accumulated assessment estimates where possible.

## 7. Procedures for dealing with the assessment of accelerants and accumulants

### 7.1 Procedures for accommodating accelerants

Students may undertake Year 11 and/or HSC courses in advance of their usual cohort or in less than the NESA's stated indicative times. Decisions about the acceleration of Higher School Certificate students will be made the Principal in accordance with the principles contained in the NESA's Guidelines for Accelerated Progression. Students may accelerate in all courses (grade advancement) or in one or more courses.

Acceleration must be based on the principle of compression of work, not omission of work. Students who accelerate in one or more courses must achieve the required outcomes of the courses, but in a shorter time frame (ie. one or more years in advance of their cohort).

For students accelerating by less than two years, students are entered for their accelerated course(s) for the ROSA, Year 11 or HSC study pattern(s) via Schools Online. Where the proposed advancement is for two years or more and is likely to lead to early entry for the secondary credentials, the principal must inform NESA prior to the acceleration of the student.

### 7.2 Procedures for accommodating accumulants

There is no time restriction on the accumulation of Year 11 courses. Students may accumulate HSC courses towards the Higher School Certificate over up to five years. The five-year period will commence in the first year the student satisfactorily completes an HSC course. Accumulation of HSC courses cannot extend over more than a five-year period. The five-year period is a 'rolling period' so that students wishing to go beyond the five years will have the earliest year's presentation deleted.

On completion of the accumulation, all patterns of study requirements must have been met for both the Year 11 and HSC study patterns. They need not be met for each calendar year of accumulation.

Students who choose to accumulate must be aware that some courses, including NESA Endorsed Courses, may be discontinued during the period of accumulation. In such cases, students may need to commence alternative courses to fulfil Higher School Certificate requirements.

A student may accumulate an Extension course by presenting the 2 unit HSC course in one year and the related Extension course in a subsequent year within the five-year accumulation period. Accelerating students may count towards their Higher School Certificate results obtained in advance of their cohort. This means that acceleration, other than grade advancement, can be regarded as a form of accumulation.

## 8. Recognition of Prior Learning

### 8.1 VET Recognition of Prior Learning

Students who have VET as part of their study pattern can apply for Recognition of Prior Learning, to assist in completion of competencies and work placement. **Appendix L** outlines the pre requisites and application process for this.

## 9. Awarding marks for an assessment task and providing feedback to students on their performance in tasks and their progress

### 9.1 Awarding marks for an assessment task

Marks must be awarded against explicit marking guidelines. Marks must accurately correlate and reflect outcomes that are being assessed. Marks must be distributed throughout tasks in an equitable manner commensurate with task complexity.

## **9.2 Explicit marks and feedback included in written assessment task notification**

Assessment tasks must include the following information; academic year group, faculty delivering the assessment task, task number, weighting, due date, detailed task description, outcomes, marking criteria, and explicit marking guidelines – thus all assessment tasks must be issued using the HKHS Assessment Task Pro Forma.

Marking guidelines on this pro forma need to be detailed, explicit and show clearly where marks will be allocated. This information is to be provided for students with the understanding that students can essentially use the assessment criteria to grade their own work to gauge assessment task progress and self-assess.

Year 11 grades and HSC marks submitted to NESA will not be made available to students.

## **9.3 Feedback given to student on assessment tasks**

All tasks are to be marked and returned to students with feedback within a two week period from submission. Teachers are to provide clear and valid feedback in line with the explicit marking guidelines that accompanies the student assessment notification to clearly identify where marks have been awarded. Additional and explicit feedback of a meaningful nature articulating assessment task strengths and assessment task areas for improvement in written form is also required for every assessment task so students are aware of what needs to be done to improve at the next assessment opportunity. Additional verbal feedback is also encouraged.

## **9.4 Reporting progress**

Students are to receive written and verbal feedback regarding progress. It is the teacher's responsibility to share constructive feedback with students so productive improvements can be made. Students will receive an overall detailed report on course progress twice per year in a formal report.

## **9.5 Procedures for distributing *Assessment Rank Order Advice* at the end of the HSC exams**

Assessment task rank is to be provided for each assessment task. Cumulative assessment rank should be provided throughout the year or as a result of student request. Cumulative Rank Order is to be provided on official report documents. Cumulative rank is to be provided after each assessment task with dated records of this maintained in the teachers monitoring (white) folder.

## **9.6 Procedures for adjusting marks for final grades**

Raw marks are to be converted into weighted marks as set by assessment task weighting. Assessment weighting marks for all valid assessment tasks are to be totalled to articulate final course achievement.

Any adjustment of marks for final grades must be approved by the Senior Executive. The adjustment of marks must not alter student ranking or affect distribution of marks.

The assessment marks submitted to the NESA must establish the rank order and reflect the relative difference between students' performances for the course.

## **9.7 Task Estimates: Occasions where estimates are given or substitute tasks administered**

Estimates or substitute tasks will be deployed at the discretion of the Senior Executive or HSC Review Panel for; individualised assessment plans, in the event a compromised task is administered, in the event an invalid task is administered, or in the event a non-discriminating task is administered.

Task estimates are applied on a case by case basis in consultation and approval with the Senior Executive. Consideration for the following is to be made:

- Similar historical tasks are recommended to be used for comparison and estimate determination.
- The student's rank does not have to be maintained when applying an estimate but existing rank would be considered (NESA recommendation).
- The estimate should be applied in consultation with the classroom teacher, Head Teacher and Senior Executive. Notes as to how the estimate was determined are to be kept in the CT's monitoring folder.

## **9.8 Vocational (VET) courses studies at school in the HSC**

In the case of VET courses studied at school, there is no assessment mark. A student competency schedule forms a record of student achievement in the units of competency for each course. The school submits to NESA a list of the units of competency successfully achieved. This information is used to produce the Certificate or Statement of Attainment. Students can sit for the HSC exam.

## **10. Procedures for advising students in writing when they are in danger of not meeting assessment requirements in a course (Appendix M)**

### **10.1 'N' Determinations**

An N Determination is a NESA process recognising the non-completion of a NESA credential, or a required stage of schooling. Although a NESA process, N Determinations are managed and applied at the school level. N Determinations can be issued 7–12, however only have serious consequences in Years 11–12, or in reference to post compulsory age students.

'N' Warnings serve three main purposes;

- a) to notify students that parents that course requirements are not being met, individual pieces of work have not been submitted, etc.
- b) to notify students and parents that the students eligibility for the Year 11 ROSA or Higher School Certificate is at risk due to a failure to meet course requirements;
- c) form the basis for a Program of Improvement for students of Post Compulsory Age who are not meeting requirements.

'N' Warnings can be issued for anything that relates to the failure to meet course requirements including;

- a) failure to submit or sit for assessment tasks
- b) failure to submit homework on three occasions
- c) consistent failure to complete class work
- d) consistent failure to participate in practical coursework eg. PD/H/PE, TAS, CAPA
- e) consistent frequent absences
- f) truancy

### **10.2 Application**

An 'N' Warning is not an end to itself. Once an 'N' Warning is issued, the student is required to rectify the situation as per the requirements outlined on the letter, and the staff member is required to document discussions regarding the 'N' Warning, and contact parents as appropriate.

The 'N' Warning Process;

- a) class teacher assesses the need / for the issuing of the 'N' Warning, in consultation with the Head Teacher if appropriate
- b) class teacher types the 'N' Warning, signs it, and attaches a copy of the task/task notification/specific incomplete work. The teacher then gives it to the Head Teacher for checking;
- c) Head Teacher assesses the reasons for the issuing of the 'N' Warning, checks that appropriate and reasonable means and timeframe for rectifying the situation have been provided to the student, and if happy that these requirements have been met will issue the 'N' warning. If concerned about any aspect of the 'N' warning, the Head Teacher will discuss the issue with the staff member.
- d) The class teacher will then interview the student to notify them that the 'N' Warning is to be issued, the reasons for the warning, rectification requirements, and has the student sign the warning letter to acknowledge receipt. The warning letter has a space at the end for students to sign before the letter is returned to the school; students are to sign in this section in the initial interview however do not take a copy of the letter at this time. The class teacher records this interview on SENTRAL with *student interview* notated as an action. The class teacher then forwards the letter to the DP (Curriculum) this for copying, distribution and mailing to parents. **(Appendix N)**
- e) Wherever possible, the class teacher will contact parents to discuss this situation and the possible impact on the student's eligibility for whichever certificate they are studying.
- f) Once the requirements of the 'N' warning have been met, the situation is rectified and the student's eligibility for the relevant course is re-established. Although students can have 'N' Warnings rescinded by completing the course requirements, they are not awarded marks for the work pertaining to the 'N' Warning.

In any instance that the 'N' warning may result in a student being recommended for an 'N' award to NESAs, parent contact by the class teacher must have occurred and be documented. NESAs will not uphold any 'N' Award unless a documented pattern of failure to meet requirements has been established, documented interviews with the student have been conducted, opportunities to rectify the situation have been provided, and documented parent contact has been made, preferably on more than one occasion. This aspect of the process is the class teacher's responsibility. In cases where there is concern about rude or verbally aggressive parents, the class teacher should seek the assistance of the Head teacher in making this contact.

If, towards the end of the course, a student has two or more 'N' warnings (for two or more different course requirements) that have not been rectified, the class teacher needs to consider as to whether to recommend to the Principal that the student is given an 'N' Award for the course. In doing so, the class teacher needs to consider;

- a) the nature of the task that the 'N' warning was issued for;
- b) that clear requirements and appropriate time has been given to the student to clear the warning/s;
- c) that school obligations have been met, particularly in reference to parent contact.
- d) the 'N' Warning documentation is then submitted to the Deputy Principal who will complete 'N' award processes with NESAs.

'N' warnings are sometimes used by the senior executive as the basis for establishing Programs of improvement for post compulsory age students who are not meeting requirements in a number of courses. In this instance 'N' Warnings are vital in allowing the school to place pressure on students, and where appropriate, in expelling students. N warnings can also be issued for students not meeting course outcomes due to sustained absences- 'diligence and sustained effort'.

**STUDENTS ARE REQUIRED TO APPLY THEMSELVES WITH *DUE DILIGENCE AND SUSTAINED EFFORT* IN ALL AREAS OF COURSES. Failure to do so will result in an N-Warning which may lead to an N-Determination in that course.**

### 10.3 'N' Warning Monitoring / Academic Improvement Program (Appendix O)

- N warning monitoring operates on a term by term basis whereby in week 5 each term the Deputy Principal's review the list of all Stage 6 students who have two or more NESA Warning letters across their pattern of study.
- Deputy Principal then liaises with the classroom teachers to ask if the student has redeemed the task.
- From these discussions a list is made and the Deputy Principal's interview each student with their parent to discuss the situation and what will happen if they fail to apply themselves with diligence and sustained effort. During that meeting students are placed on a five week monitoring program to assist them achieve the course outcomes. Issues related to their non-participation are discussed in detail eg: class work, focus in class, attendance, completion of task etc. Three criteria for monitoring are negotiated with parents and the student and these are documented on a monitoring card to give to the teachers (teachers keep the cards, not the students – a card per course for the 5 weeks). The card has a 1-5 rating system. 1 being minimalist on whatever criteria and 5 being satisfactory. Students are also asked to indicate what additional support they may require to get back on track (mentor, SLSO support for organisation, counsellor etc).
- Over the five weeks teachers mark the monitoring card every lesson.
- At the end of the five weeks the Deputy Principal collects the cards and collates the data (percentages for each criteria).
- Students who have achieved 80% or more on each criteria are congratulated and a letter is sent home indicating they are back on track.
- Students who have not attained the required participation again meet with their parent/s and the Deputy Principal.
  - Students who have achieved <80% and are 16 & 11months may face expulsion for unsatisfactory participation in learning for a student of post compulsory age.
  - Students <80% and below the 16 & 11 months age are placed on another five week program. If after the second five weeks there is no improvement the school will have demonstrated sufficient evidence for N Award; or if over 17, expulsion.

## 11. Procedures for conducting school reviews of final assessment marks and appeals to NESA

### 11.1 Procedures when disputes arise over assessment tasks

Students have the right to appeal the mark awarded for an assessment task within **7 Days** of the marking feedback being given. Students are to complete the student appeal form (**Appendix P**) and return to DP Curriculum.

Disputes are to be put before the HSC Review panel. Investigation into claims and recommendations will be made by this team. Findings will be communicated to the person making the complaint by a designated member from the HSC Review panel.

#### The HSC Review panel will consist of:

Deputy Principal (Curriculum)  
One other senior executive member  
Faculty Head Teacher

If the complainant wishes to appeal the decision of the HSC Review Panel, the appeal will be heard by the Principal.

In extreme cases an external panel to the school could be called in to review the appeal. This would be done in consultation with School Director.

### **11.2 Procedures for conducting school reviews of assessment**

The teacher must assess the student's actual performance, not potential performance. Assessment marks must not be modified to take into account possible effects of illness or domestic situations except as the determined outcome of *Misadventure Proceedings*. Attendance and application are not to be taken into account in either the final assessment mark or in any individual assessment task.

NESA requires all students to follow an assessment program and have an assessment mark submitted. The minimum requirement is that the student must make a genuine attempt at assessment tasks that contribute in excess of 50 percent of available marks in the course. A student who does not comply with the assessment requirements and receives an 'N' determination in a course will have neither an assessment mark nor an examination mark awarded for that course.

Assessment reviews will be conducted through ongoing monitoring at faculty level by respective Head Teachers. Assessment reviews will also be conducted by Senior Executive during faculty audits. Assessment reviews may also be carried out immediately after senior student interviews.

### **11.3 Procedures for managing appeals to NESA**

Students wishing to appeal against the grade(s) in any course awarded to them by the school must submit a written appeal, together with evidence, to their principal. If the appeal is upheld, the principal will send notification of the new grade(s) to NESA. In order to be successful in such appeals, students will need to substantiate that the grade(s) awarded in the course(s) was inconsistent with the progressive reporting from the school.

Since the appeal is directed to the progressive reporting by the school, NESA will not revise individual tasks or test marks. Appeals management will reflect processes set out in the ACE manual regarding 'Student appeals against Assessment Rankings in HSC Courses'.

## **12. Communicating the policy**

### **12.1 Student awareness to their rights and responsibilities regarding the assessment program**

Teachers are responsible for informing students about their rights and responsibilities regarding assessment. This is to be done on a regular basis throughout the year in class. Students will also be made aware of assessment rights and responsibilities throughout the year during cohort meetings and parent information evenings. Senior students will be provided a copy of this policy in their Assessment Schedule Booklets, and advised of its accessibility on the schools website.

## 13. HSC All My Own Work

### 13.1 HSC All My Own Work

Students are required by the NESA to complete this course as part of their entry into Year 11 and HSC studies. It is expected that students will abide by the ethical academic standards outlined in that course. Students can refresh their knowledge of these practices by logging onto [www.NESA.nsw.edu.au](http://www.NESA.nsw.edu.au).

#### **NB MAKE SURE YOU CHECK DETAILS ABOVE**

1. LATE WORK – PENALTIES.
2. 50% RULE for ZERO MARKS (Non-Attempt/Non-Serious Attempt).
3. NON-ASSESSMENT TASKS must be completed – the Principal will not sign satisfactory completion (hence no HSC in that course) when students neglect non-assessment work.
4. MALPRACTICE.
5. EXAMINATION RULES.
6. HSC ALL MY OWN WORK.

## 14. Expulsion

### 14.1 Expulsion from a particular school

1. This means that the student is expelled from one particular school only. With the exception of the circumstances outlined in 2(b) below, the principal, in conjunction with the School Director or relevant area office staff and the parents or caregiver, must arrange a suitable enrolment for the student in another school or educational facility.
2. The decision to expel a student from the school may be made on the basis of:
  - a) misbehaviour of a student of any age; or
  - b) unsatisfactory participation in learning by a student of post-compulsory age, eg. a documented pattern of non-satisfactory completion, non-serious attempts to meet course requirements for the award of a ROSA or Higher School Certificate.
3. Prior to making a decision to expel on the grounds set out in 2(b) above, the student must receive at least one formal written warning that such action is being contemplated. A program of improvement should be developed in conjunction with the student. The student must also be provided with a reasonable period in which to demonstrate an improvement in his or her participation.
4. Where the student is being expelled on the grounds set out in 2(b) above, the arrangement of an alternative placement is the responsibility of the student and the student's parents or caregiver. If a suitable alternative cannot be arranged, it is not necessary in these cases for the principal to readmit the student, recommend expulsion from the government school system or refer the issue to the Deputy Regional Director.
5. The principal will ensure, except as a result of a most serious incident, that all appropriate students welfare strategies and discipline options have been implemented and documented prior to expelling a student from the school because of misbehaviour.



## HENRY KENDALL HIGH SCHOOL SCHEDULE OF ASSESSMENT

### ANCIENT HISTORY

### YEAR 11 COURSE 2023

Task number	Task 1	Task 2	Task 3	
Nature of task	Source Analysis	Historical Investigation	Final Course Exam	
Timing	Term 1, Week 9 2023	Term 2, Week 8 2023	Term 3, Week 9/10 2023	
Outcomes assessed	AH11-6, AH11-7, AH11-9, AH11-10	AH11-3, AH11-4, AH11-5, AH11-6, AH11-8, AH11-9	AH11-1, AH11-2, AH11-6, AH11-7, AH11-9	
Components	Weighting %			
Knowledge and understanding	20%		20%	40%
Historical skills	5%	5%	10%	20%
Historical inquiry		20%		20%
Communication	5%	5%	10%	20%
Total %	30%	30%	40%	100%

STUDENTS ARE REQUIRED TO APPLY THEMSELVES **WITH DUE DILIGENCE AND SUSTAINED EFFORT IN ALL AREAS OF COURSES.**  
Failure to do so will result in a N-Warning which may lead to a N-Determination in that course



## HENRY KENDALL HIGH SCHOOL SCHEDULE OF ASSESSMENT

### BIOLOGY

### YEAR 11 COURSE 2023

Task number	Task 1	Task 2	Task 3	
Nature of task	Depth Study Rock Platform Investigation	Practical Investigation Task	Final Course Exam	
Timing	Term 1, Week 9 2023	Term 2, Week 9 2023	Term 3, Week 9/10 2023	
Outcomes assessed	BIO 11-1, 11-2, 11-3, 11-4, 11-5, 11-7, 11-10, 11-11	BIO 11-3, 11-4, 11-5, 11-6, 11-8	BIO 11-5 to 11-11	
Components	Weighting %			
Knowledge and understanding	10%	10%	20%	40%
Skills in working scientifically	30%	20%	10%	60%
Total %	40%	30%	30%	100%

STUDENTS ARE REQUIRED TO APPLY THEMSELVES **WITH DUE DILIGENCE AND SUSTAINED EFFORT IN ALL AREAS OF COURSES.**  
Failure to do so will result in a N-Warning which may lead to a N-Determination in that course



# HENRY KENDALL HIGH SCHOOL SCHEDULE OF ASSESSMENT

## BUSINESS STUDIES

## YEAR 11 COURSE 2023

Task number	Task 1	Task 2	Task 3	
Nature of task	Media File and Business Report	Business Management Research and Essay	Final Course Exam	
Timing	Term 1, Week 9 2023	Term 2, Week 10 2023	Term 3, Week 9/10 2023	
Outcomes assessed	P2, P7, P9	P4, P5, P8	P1, P2, P3, P4, P5, P6, P10	
Components	Weighting %			
Knowledge and understanding	10%	5%	25%	40%
Stimulus-based skills	10%	5%	5%	20%
Inquiry and research	5%	15%		20%
Communication	5%	5%	10%	20%
Total %	30%	30%	40%	100%

STUDENTS ARE REQUIRED TO APPLY THEMSELVES **WITH DUE DILIGENCE AND SUSTAINED EFFORT IN ALL AREAS OF COURSES.**  
Failure to do so will result in a N-Warning which may lead to a N-Determination in that course



## HENRY KENDALL HIGH SCHOOL SCHEDULE OF ASSESSMENT

### CHEMISTRY

### YEAR 11 COURSE 2023

Task number	Task 1	Task 2	Task 3	
Nature of task	Practical Investigation	Depth Study Investigation	Final Course Exam	
Timing	Term 2, Week 3 2023	Term 3, Week 3 2023	Term 3, Week 9/10 2023	
Outcomes assessed	CH 11-3, 11-4, 11-5, 11-6, 11-9	CH 11-1, 11-2, 11-3, 11-4, 11-5, 11-7, 11-10	CH 11-1 to 11-11	
Components	Weighting			
Knowledge and understanding	5%	5%	30%	40%
Skills in working scientifically	20%	30%	10%	60%
Total %	25%	35%	40%	100%

STUDENTS ARE REQUIRED TO APPLY THEMSELVES **WITH DUE DILIGENCE AND SUSTAINED EFFORT IN ALL AREAS OF COURSES.**  
Failure to do so will result in a N-Warning which may lead to a N-Determination in that course



# HENRY KENDALL HIGH SCHOOL SCHEDULE OF ASSESSMENT

## COMMUNITY & FAMILY STUDIES

## YEAR 11 COURSE 2023

Task number	Task 1	Task 2	Task 3	
<b>Nature of task</b>	Resource Management Case Study	Individuals and Groups Research Task	Final Exam Resource Management Individuals and Groups Families and Communities	
<b>Timing</b>	Term 1, Week 8 2023	Term 2, Week 8 2023	Term 3, Week 9 2023	
<b>Outcomes assessed</b>	P1.1, 1.2, P4.2, P5.1, P6.1, P6.2	P1.2, P2.1, P2.3, P3.1, P4.1, P6.1, P6.2	P1.1 to P 6.2	
Components	Weighting %			
<b>Knowledge and understanding of course content</b>	10%	15%	15%	40%
<b>Skills in critical thinking, research methodology, analysis and communicating</b>	15%	25%	20%	60%
<b>Total %</b>	<b>25%</b>	<b>40%</b>	<b>35%</b>	<b>100%</b>

STUDENTS ARE REQUIRED TO APPLY THEMSELVES **WITH DUE DILIGENCE AND SUSTAINED EFFORT IN ALL AREAS OF COURSES.**  
Failure to do so will result in a N-Warning which may lead to a N-Determination in that course



## HENRY KENDALL HIGH SCHOOL SCHEDULE OF ASSESSMENT

### DRAMA

### YEAR 11 COURSE 2023

Task number	Task 1	Task 2	Task 3	
<b>Nature of task</b>	Improvisation, Playbuilding and performance Group Playbuilding	Elements of Production 7 Stages of Grieving Mini IP (no performance)	Yearly Exam Written Examination	
<b>Timing</b>	Term 2, Week 1 2023	Term 3, Week 1 2023	Term 3, Week 10 2023	
<b>Outcomes assessed</b>	P1.4, P1.5, P3.3	P1.6, P2.3, P3.1	P2.1, P2.2, P3.2	
Components				Weighting %
<b>Making</b>	15	10	15	<b>40</b>
<b>Performing</b>	15	15		<b>30</b>
<b>Critically Studying</b>	5	10	15	<b>30</b>
<b>Total %</b>	<b>35</b>	<b>35</b>	<b>30</b>	<b>100</b>

STUDENTS ARE REQUIRED TO APPLY THEMSELVES WITH DUE DILIGENCE AND SUSTAINED EFFORT IN ALL AREAS OF COURSES.  
Failure to do so will result in a N-Warning which may lead to a N-Determination in that course.



## HENRY KENDALL HIGH SCHOOL SCHEDULE OF ASSESSMENT

### ENGINEERING STUDIES

### YEAR 11 COURSE 2023

Task number	Task 1	Task 2	Task 3	
Nature of task	Engineering Product Analysis	Engineering Report	End of Course Exam	
Timing	Term 1, Week 9 2023	Term 3, Week 5 2023	Term 3, Week 9/10 2023	
Outcomes assessed	P1.2, P3.3, P4.1	P2.1, P3.2, P4.2, P4.3, P5.1, P5.2	P1.1, P2.2, P3.1, P6.1, P6.2	
Components	Weighting %			
Knowledge and understanding of course content	10%	10%	40%	60%
Knowledge and skills in research, problem solving and communication related to engineering practice	10%	30%		40%
Total %	20%	40%	40%	100%

STUDENTS ARE REQUIRED TO APPLY THEMSELVES **WITH DUE DILIGENCE AND SUSTAINED EFFORT IN ALL AREAS OF COURSES.**  
Failure to do so will result in a N-Warning which may lead to a N-Determination in that course



## HENRY KENDALL HIGH SCHOOL SCHEDULE OF ASSESSMENT

### ENGLISH ADVANCED

### YEAR 11 COURSE 2023

Task number	Task 1	Task 2	Task 3	
<b>Nature of task</b>	Imaginative Response and Reflection Common Module - Reading to Write	Multimodal Module A	Final Course Exam Common Module, Module B	
<b>Timing</b>	Term 1, Week 10 2023	Term 2, Week 8 2023	Term 3, Week 9/10 2023	
<b>Outcomes assessed</b>	EA11-1, EA11-3, EA11-4, EA11-5, EA11-8	EA11-2, EA11-6, EA11-7, EA11-9	EA11-1, EA11-3, EA11-4, EA11-5, EA11-6	
Components	Weighting %			
<b>Knowledge and understanding of course content</b>	15%	15%	20%	<b>50%</b>
<b>Skills in responding to texts and communication of ideas appropriate to audience, purpose and context across all modes</b>	15%	15%	20%	<b>50%</b>
<b>Total %</b>	<b>30%</b>	<b>30%</b>	<b>40%</b>	<b>100%</b>

STUDENTS ARE REQUIRED TO APPLY THEMSELVES **WITH DUE DILIGENCE AND SUSTAINED EFFORT IN ALL AREAS OF COURSES.**  
Failure to do so will result in a N-Warning which may lead to a N-Determination in that course



# HENRY KENDALL HIGH SCHOOL SCHEDULE OF ASSESSMENT

## ENGLISH EXTENSION I

## YEAR 11 COURSE 2023

Task number	Task 1	Task 2	Task 3	
Nature of task	Narrative Task	Multimodal Presentation Independent Research Project	Final Course Exam Common Module	
Timing	Term 1, Week 9 2023	Term 2, Week 10 2023	Term 3, Week 9/10 2023	
Outcomes assessed	EE11-1, EE11-3	EE11-3, EE11-6	All outcomes assessed	
Components	Weighting %			
Knowledge and understanding of complex texts and of how and why they are valued	15%	20%	15%	50%
Skills in complex analysis, sustained composition and independent investigation	15%	20%	15%	50%
Total %	30%	40%	30%	100%

STUDENTS ARE REQUIRED TO APPLY THEMSELVES **WITH DUE DILIGENCE AND SUSTAINED EFFORT IN ALL AREAS OF COURSES.**  
Failure to do so will result in a N-Warning which may lead to a N-Determination in that course



## HENRY KENDALL HIGH SCHOOL SCHEDULE OF ASSESSMENT

### ENGLISH STANDARD

### YEAR 11 COURSE 2023

Task number	Task 1	Task 2	Task 3	
Nature of task	Imaginative Response and Reflection Common Module - Reading to Write	Multimodal Module A	Final Course Exam Common Module, Module B	
Timing	Term 1, Week 10 2023	Term 2, Week 8 2023	Term 3, Week 9/10 2023	
Outcomes assessed	EN11-1, EN11-3, EN11-4, EN11-5, EN11-8	EN11-2, EN11-6, EN11-7, EN11-9	EN11-1, EN11-3, EN11-4, EN11-5, EN11-6	
Components	Weighting %			
Knowledge and understanding of course content	15%	15%	20%	50%
Skills in responding to texts and communication of ideas appropriate to audience, purpose and context across all modes	15%	15%	20%	50%
Total %	30%	30%	40%	100%

STUDENTS ARE REQUIRED TO APPLY THEMSELVES **WITH DUE DILIGENCE AND SUSTAINED EFFORT IN ALL AREAS OF COURSES.**  
Failure to do so will result in a N-Warning which may lead to a N-Determination in that course



# HENRY KENDALL HIGH SCHOOL SCHEDULE OF ASSESSMENT

## ENGLISH STUDIES

## YEAR 11 COURSE 2023

Task number	Task 1	Task 2	Task 3	
<b>Nature of task</b>	Mandatory Module: Achieving Through English - Multimodal	Portfolio of Work	Final Course Exam	
<b>Timing</b>	Term 1, Week 10 2023	Term 3, Week 5 2023	Term 3, Week 9/10 2023	
<b>Outcomes assessed</b>	ES11-3, ES11-6, ES11-8	ES11-2, ES11-6, ES11-7, ES11-9, ES11-10	ES11-1, ES11-4, ES11-5	
Components	Weighting %			
<b>Knowledge and understanding of course content</b>	15%	15%	20%	<b>50%</b>
<b>Skills in responding to texts and communication of ideas appropriate to audience purpose and context across all modes</b>	15%	15%	20%	<b>50%</b>
<b>Total %</b>	<b>30%</b>	<b>30%</b>	<b>40%</b>	<b>100%</b>

STUDENTS ARE REQUIRED TO APPLY THEMSELVES **WITH DUE DILIGENCE AND SUSTAINED EFFORT IN ALL AREAS OF COURSES.**  
Failure to do so will result in a N-Warning which may lead to a N-Determination in that course



# HENRY KENDALL HIGH SCHOOL SCHEDULE OF ASSESSMENT

## GEOGRAPHY

## YEAR 11 COURSE 2023

Task number	Task 1	Task 2	Task 3	
Nature of task	Geographical Inquiry Task	Senior Geography Project	Final Course Exam	
Timing	Term 1, Week 8 2023	Term 3, Week 2 2023	Term 3, Week 9/10 2023	
Outcomes assessed	P1, P2, P3, P6, P9, P10, P12	P7, P8, P9, P10, P11, P12	P1, P2, P3, P4, P5, P9, P10, P12	
Components	Weighting %			
Knowledge and understanding	10%	10%	20%	40%
Skills in working geographically	20%	30%	10%	60%
Total %	30%	40%	30%	100%

STUDENTS ARE REQUIRED TO APPLY THEMSELVES **WITH DUE DILIGENCE AND SUSTAINED EFFORT IN ALL AREAS OF COURSES.**  
Failure to do so will result in a N-Warning which may lead to a N-Determination in that course

This document may change due to Training Package and NSW Education Standards Authority (NESA) updates. Notification of variations will be made in time.

## HENRY KENDALL HIGH SCHOOL SCHEDULE OF ASSESSMENT

### Preliminary Hospitality- Food & Beverage Stream

### Student Competency Assessment Schedule 2023

Assessment Tasks for Certificate II Hospitality SIT20316 Assessment Due:		Cluster A	Cluster B	Cluster C	Yearly Examination
		Getting ready for work	Practical Café Skills	Working relationships	
		Week: 8 Term: 1, 2023	Week: 10 Term: 3, 2023	Week: 8 Term: 3, 2023	Week: 9/10 Term: 3 2023
Code	Unit of Competency				HSC Examinable Units of Competency
SITXFSA001	Use hygienic practices for food safety	X			
SITXWHS001	Participate in safe work practices	X			
SITHFAB005	Prepare and serve espresso coffee		X		
SITHCCC003	Prepare and present sandwiches		X		
SITHFAB004	Prepare and serve non-alcoholic beverages		X		
BSBWOR203	Work effectively with others			X	
SITXCOM002	Show social and cultural sensitivity			X	

Depending on the achievement of units of competency, the possible qualification outcome is a Certificate II in Hospitality SIT20316 or a Statement of Attainment towards Certificate II in Hospitality SIT20316.

**Schools may schedule examinations in preparation for the HSC exam. These do not form part of the RTO assessment requirements.**

The assessment components in this course are competency based. This means that students need to demonstrate that they have gained and can apply the specific knowledge and skills of each unit of competency. Competency assessment is graded as “not yet competent” or “competent”. In some cases other descriptive words may be used leading up to “competent”. A course mark is not allocated.

SIT20316 Hospitality Food and Beverage Preliminary Assessment Schedule October 2022



## HENRY KENDALL HIGH SCHOOL SCHEDULE OF ASSESSMENT

### INDUSTRIAL TECHNOLOGY TIMBER

### YEAR 11 COURSE 2023

Task number	Task 1	Task 2	Task 3	
Nature of task	Project 1 & Folio Documentation	Project 2 & Folio Documentation	Final Course Exam	
Timing	Term 1, Week 10 2023	Term 3, Week 5 2023	Term 3, Week 9/10 2023	
Outcomes assessed	P3.1, P3.3, P4.2, P5.2, P6.1	P2.2, P3.2, P4.1, P5.1, P6.2	P1.1, P1.2, P2.1, P4.3, P7.1, P7.2	
Components	Weighting %			
Knowledge and understanding of course content	10%	10%	20%	40%
Knowledge and skills in the management, communication and production of projects	20%	30%	10%	60%
Total %	30%	40%	30%	100%

STUDENTS ARE REQUIRED TO APPLY THEMSELVES **WITH DUE DILIGENCE AND SUSTAINED EFFORT IN ALL AREAS OF COURSES.**  
Failure to do so will result in a N-Warning which may lead to a N-Determination in that course



## HENRY KENDALL HIGH SCHOOL SCHEDULE OF ASSESSMENT

### LEGAL STUDIES

### YEAR 11 COURSE 2023

Task number	Task 1	Task 2	Task 3	
<b>Nature of task</b>	Media File and Ext Response	Research / Essay	Final Course Exam	
<b>Timing</b>	Term 1, Week 10 2023	Term 2, Week 8 2023	Term 3, Week 9/10 2023	
<b>Outcomes assessed</b>	P1, P2, P3, P4, P6, P8	P1, P2, P4, P5, P6, P7, P8, P9, P10	P1, P2, P3, P4, P5, P6, P7, P9, P10	
Components	Weighting %			
<b>Knowledge and Understanding</b>	10%	10%	20%	<b>40%</b>
<b>Knowledge and skills in the management, communication and production of projects</b>	10%	30%	20%	<b>60%</b>
<b>Total %</b>	<b>20%</b>	<b>40%</b>	<b>40%</b>	<b>100%</b>

STUDENTS ARE REQUIRED TO APPLY THEMSELVES **WITH DUE DILIGENCE AND SUSTAINED EFFORT IN ALL AREAS OF COURSES.**  
Failure to do so will result in a N-Warning which may lead to a N-Determination in that course



## HENRY KENDALL HIGH SCHOOL SCHEDULE OF ASSESSMENT

### MATHEMATICS ADVANCED

### YEAR 11 COURSE 2023

Task number	Task 1	Task 2	Task 3	
<b>Nature of task</b>	In-Class Assessment:	Assignment / Investigation	Final Course Exam	
<b>Timing</b>	Term 1, Week 8 2023	Term 2, Week 10 2023	Term 3, Weeks 9/10 2023	
<b>Outcomes assessed</b>	Possible Outcomes: MA11-1, MA11-2, MA11-3, MA11-4, MA11-5, MA11-6, MA11-7, MA11-8, MA11-9	Possible Outcomes: MA11-1, MA11-2, MA11-3, MA11-4, MA11-5, MA11-6, MA11-7, MA11-8, MA11-9	Possible Outcomes: MA11-1, MA11-2, MA11-3, MA11-4, MA11-5, MA11-6, MA11-7, MA11-8, MA11-9	
Components	Weighting %			
<b>Concepts, skills &amp; techniques</b>	15%	15%	20%	<b>50%</b>
<b>Reasoning &amp; communication</b>	15%	15%	20%	<b>50%</b>
<b>Total %</b>	<b>30%</b>	<b>30%</b>	<b>40%</b>	<b>100%</b>

STUDENTS ARE REQUIRED TO APPLY THEMSELVES **WITH DUE DILIGENCE AND SUSTAINED EFFORT IN ALL AREAS OF COURSES.**  
Failure to do so will result in a N-Warning which may lead to a N-Determination in that course



## HENRY KENDALL HIGH SCHOOL SCHEDULE OF ASSESSMENT

### MATHEMATICS STANDARD

### YEAR 11 COURSE 2023

Task number	Task 1	Task 2	Task 3	
<b>Nature of task</b>	Assignment / Investigation	In-Class Assessment: Open Book	Final Course Exam	
<b>Timing</b>	Term 1, Week 10 2023	Term 2, Week 10 2023	Term 3, Weeks 9/10 2023	
<b>Outcomes assessed</b>	Possible Outcomes: MS11-1, MS11-2, MS11-3, MS11-4, MS11-5, MS11-6, MS11-7, MS11-8, MS11-9, MS11-10	Possible Outcomes: MS11-1, MS11-2, MS11-3, MS11-4, MS11-5, MS11-6, MS11-7, MS11-8, MS11-9, MS11-10	Possible Outcomes: MS11-1, MS11-2, MS11-3, MS11-4, MS11-5, MS11-6, MS11-7, MS11-8, MS11-9, MS11-10	
Components	Weighting %			
<b>Understanding, fluency &amp; communication</b>	15%	15%	20%	<b>50%</b>
<b>Problem solving, reasoning &amp; justification</b>	15%	15%	20%	<b>50%</b>
<b>Total %</b>	<b>30%</b>	<b>30%</b>	<b>40%</b>	<b>100%</b>

STUDENTS ARE REQUIRED TO APPLY THEMSELVES **WITH DUE DILIGENCE AND SUSTAINED EFFORT IN ALL AREAS OF COURSES.**  
Failure to do so will result in a N-Warning which may lead to a N-Determination in that course



## HENRY KENDALL HIGH SCHOOL SCHEDULE OF ASSESSMENT

### MATHEMATICS EXTENSION

### YEAR 11 COURSE 2023

Task number	Task 1	Task 2	Task 3	
<b>Nature of task</b>	Assignment / Investigation	In-Class Assessment: Open Book	Final Course Exam	
<b>Timing</b>	Term 1, Week 10 2023	Term 2, Week 9 2023	Term 3, Weeks 9/10 2023	
<b>Outcomes assessed</b>	Possible Outcomes: MA11-1 to MA11-9 ME11-1, ME11-2, ME11-3, ME11-4, ME11-5, ME11-6, ME11-7	Possible Outcomes: MA11-1 to MA11-9 ME11-1, ME11-2, ME11-3, ME11-4, ME11-5, ME11-6, ME11-7	Possible Outcomes: MA11-1 to MA11-9 ME11-1, ME11-2, ME11-3, ME11-4, ME11-5, ME11-6, ME11-7	
Components	Weighting %			
<b>Concepts, skills &amp; techniques</b>	15%	15%	20%	<b>50%</b>
<b>Reasoning &amp; communication</b>	15%	15%	20%	<b>50%</b>
<b>Total %</b>	<b>30%</b>	<b>30%</b>	<b>40%</b>	<b>100%</b>

STUDENTS ARE REQUIRED TO APPLY THEMSELVES **WITH DUE DILIGENCE AND SUSTAINED EFFORT IN ALL AREAS OF COURSES.**  
Failure to do so will result in a N-Warning which may lead to a N-Determination in that course



## HENRY KENDALL HIGH SCHOOL SCHEDULE OF ASSESSMENT

### MODERN HISTORY

### YEAR 11 COURSE 2023

Task number	Task 1	Task 2	Task 3	
Nature of task	Essay	Historical Investigation	Final Course Exam	
Timing	Term 1, Week 8 2023	Term 2, Week 9 2023	Term 3, Week 9/10 2023	
Outcomes assessed	MH11-1, MH11-2, MH11-4, MH11-7, MH11-9	MH11-2, MH11-3, MH11-6, MH11-7, MH11-9, MH11-10	MH11-1, MH11-4, MH11-6, MH11-7, MH11-9	
Components	Weighting %			
Knowledge and understanding	20%		20%	40%
Historical skills	10%		10%	20%
Historical inquiry		20%		20%
Communication		10%	10%	20%
Total %	30%	30%	40%	100%

STUDENTS ARE REQUIRED TO APPLY THEMSELVES **WITH DUE DILIGENCE AND SUSTAINED EFFORT IN ALL AREAS OF COURSES.**  
Failure to do so will result in a N-Warning which may lead to a N-Determination in that course



# HENRY KENDALL HIGH SCHOOL SCHEDULE OF ASSESSMENT

## MUSIC 1

## YEAR 11 COURSE 2023

Task number	Task 1	Task 2	Task 3	
Nature of task	Performance & Musicology	Arrangement and / or Composition	Final Course Exam Performance and Listening Exam	
Timing	Term 1, Week 8-10 2023	Term 2, Week 8 2023	Term 3, Week 9/10 2023	
Outcomes assessed	P1, P2, P4, P6, P8	P3, P4, P5, P6, P7, P8	P1, P2, P4, P6, P7	
Components	Weighting %			
Aural (25%)		5%	20%	25%
Composition (25%)		25%		25%
Musicology (25%)	20%	5%		25%
Performance (25%)	5%		20%	25%
Total %	25%	35%	40%	100%

STUDENTS ARE REQUIRED TO APPLY THEMSELVES **WITH DUE DILIGENCE AND SUSTAINED EFFORT IN ALL AREAS OF COURSES.**  
Failure to do so will result in a N-Warning which may lead to a N-Determination in that course



## HENRY KENDALL HIGH SCHOOL SCHEDULE OF ASSESSMENT

### PERSONAL DEVELOPMENT, HEALTH & PHYSICAL EDUCATION

### YEAR 11 COURSE 2023

Task number	Task 1	Task 2	Task 3	
<b>Nature of task</b>	Core 1 Better Health for Individuals Research Report	Core 2 Body in Motion Fitness Analysis	Final Course Exam Core 1 Core 2 Option 1 and 4	
<b>Timing</b>	Term 1, Week 10 2023	Term 2, Week 9 2023	Term 3, Week 9/10 2023	
<b>Outcomes assessed</b>	P2, P3, P6, P15, P16	P7, P8, P11, P17	P1, P2, P3, P4, P5, P6, P7, P8, P9, P10, P11, P12, P15, P16, P17	
Components	Weighting %			
<b>Knowledge and understanding of course content</b>	10%	10%	20%	40%
<b>Skills in critical thinking, research, analysis and communicating.</b>	20%	20%	20%	60%
<b>Total %</b>	<b>30%</b>	<b>30%</b>	<b>40%</b>	<b>100%</b>

STUDENTS ARE REQUIRED TO APPLY THEMSELVES **WITH DUE DILIGENCE AND SUSTAINED EFFORT IN ALL AREAS OF COURSES.**  
Failure to do so will result in a N-Warning which may lead to a N-Determination in that course



## HENRY KENDALL HIGH SCHOOL SCHEDULE OF ASSESSMENT

### PHYSICS

### YEAR 11 COURSE 2023

Task number	Task 1	Task 2	Task 3	
Nature of task	Practical Investigation	Depth Study Investigation	Final Course Exam	
Timing	Term 1, Week 9 2023	Term 2, Week 9 2023	Term 3, Week 9/10 2023	
Outcomes assessed	PH 11-1, 11-2, 11-3, 11-4, 11-7, 11-8	PH 11-1, 11-2, 11-3, 11-4, 11-5, 11-7, 11-10	PH 11-1 to 11-11	
Components	Weighting %			
Knowledge and understanding	10%	10%	20%	40%
Skills in working scientifically	20%	30%	10%	60%
Total %	30%	40%	30%	100%

STUDENTS ARE REQUIRED TO APPLY THEMSELVES **WITH DUE DILIGENCE AND SUSTAINED EFFORT IN ALL AREAS OF COURSES.**

Failure to do so will result in a N-Warning which may lead to a N-Determination in that course

# HENRY KENDALL HIGH SCHOOL SCHEDULE OF ASSESSMENT

## Preliminary – Primary Industries – Agriculture

## Student Competency Assessment Schedule 2023

Assessment Tasks for  Certificate II in Agriculture AHC20116  Assessment due		Cluster A	Cluster B	Cluster C	Cluster D	Yearly Examination
		Farming	Health and Welfare of Livestock	Monitor Water Supply	Basic Nursery Work	Week: Term:
		Week: 10 Term: 1, 2023	Week: 10 Term: 2, 2023	Week: 2 Term: 3, 2023	Week: 10 Term: 3, 2023	
Code	Unit of Competency					HSC Examinable Units of Competency
INDUCTION	Induction	X				
AHCMOM202	Operate tractors	X				
AHCWHS201	Participate in work health and safety processes	X				
AHCBIO203	Inspect and clean machinery, tools and equipment to preserve biosecurity	X				
AHCLSK205	Handle livestock using basic techniques		X			
AHCLSK202	Care for health and welfare of livestock		X			
AHCLSK204	Carry out regular livestock observation		X			
AHCLSK209	Monitor water supplies			X		
AHCSOL203	Assist with soil or growing media sampling and testing				X	
AHCNSY206	Care for nursery plants				X	

Depending on the achievement of units of competency, the possible qualification outcome is **Certificate II Agriculture AHC20116** or a **Statement of Attainment towards Certificate II Agriculture AHC20116**.

**Schools may schedule exam items in preparation for the HSC exam. These do not form part of the RTO assessment requirements.**

The assessment components in this course are competency based. This means that students need to demonstrate that they have gained and can apply the specific knowledge and skills of each unit of competency. Competency assessment is graded as “not yet competent” or “competent”. In some cases other descriptive words may be used leading up to “competent”. A course mark is not allocated.

AHC20116 Agriculture Preliminary Assessment Schedule September 2022

## HENRY KENDALL HIGH SCHOOL SCHEDULE OF ASSESSMENT

### Preliminary Retail Services

### Student Competency Assessment Schedule 2023

Assessment Tasks for Certificate III in Retail SIR30216  Assessment Due:		Cluster A	Cluster B	Cluster C	Yearly Exam (Optional)
		Safety	Customer Service: You in Retail	Are You Being Served?	
		Week: 6 Term: 1, 2023	Week: 6 Term: 2, 2023	Week: 6 Term: 3, 2023	
Code	Unit of Competency				HSC Examinable Units of Competency
<b>SIRXWHS002</b>	Contribute to workplace health and safety	X			
<b>SIRXCEG001</b>	Engage the customer		X		
<b>SIRXCOM002</b>	Work effectively in a team		X		
<b>SIRXCEG002</b>	Assist with customer difficulties			X	
<b>SIRXCEG003</b>	Build customer relationships and loyalty			X	

Depending on the achievement of units of competency, the possible qualification outcome is a **Certificate III in Retail SIR30216** or a **Statement of Attainment towards a Certificate III in Retail SIR30216**.

**Schools will schedule exam items in preparation for the HSC. These do not form part of the RTO assessment requirements.**

The assessment components in this course are competency based. This means that students need to demonstrate that they have gained and can apply the specific knowledge and skills of each unit of competency. Competency assessment is graded as “not yet competent” or “competent”. In some cases other descriptive words may be used leading up to “competent”. A course mark is not allocated.



# HENRY KENDALL HIGH SCHOOL SCHEDULE OF ASSESSMENT

## SOCIETY & CULTURE

## YEAR 11 COURSE 2023

Task number	Task 1	Task 2	Task 3	
Nature of task	Research Task & Presentation The Social and Cultural World	Essay (in class) Personal and Social Identity	Final Course Exam	
Timing	Term 1, Week 9 2023	Term 2, Week 8 2023	Term 3, Week 9/10 2023	
Outcomes assessed	P1, P3, P6, P9, P10	P1, P2, P3, P5, P8, P10	P1, P3, P4, P7, P8, P9	
Components	Weighting %			
Knowledge and understanding of course content	10%	20%	20%	50%
Application and evaluation of social and cultural research methods	10%	10%	10%	30%
Communication of information, ideas and issues in appropriate forms	10%	5%	5%	20%
Total %	30%	35%	35%	100%

STUDENTS ARE REQUIRED TO APPLY THEMSELVES **WITH DUE DILIGENCE AND SUSTAINED EFFORT IN ALL AREAS OF COURSES.**  
Failure to do so will result in a N-Warning which may lead to a N-Determination in that course



## HENRY KENDALL HIGH SCHOOL SCHEDULE OF ASSESSMENT

### SOFTWARE DESIGN & DEVELOPMENT

### YEAR 11 COURSE 2023

Task number	Task 1	Task 2	Task 3	
Nature of task	Research Task	Preliminary Project	Final Course Exam	
Timing	Term 1, Week 10 2023	Term 3, Week 3 2023	Term 3, Weeks 9/10 2023	
Outcomes assessed	P1.1, P1.3, P3.1, P4.1, P5.2	P1.2, P4.1, P4.2, P5.1, P5.2, P6.2, P6.3	P1.1, P1.2, P1.3, P2.1, P2.2, P3.1, P4.1, P4.3, P5.1, P5.2, P6.1	
Components	Weighting %			
Knowledge and understanding of course content	10%	10%	30%	50%
Knowledge and skills in the design and development of software solutions	10%	30%	10%	50%
Total %	20%	40%	40%	100%

STUDENTS ARE REQUIRED TO APPLY THEMSELVES **WITH DUE DILIGENCE AND SUSTAINED EFFORT IN ALL AREAS OF COURSES.**  
Failure to do so will result in a N-Warning which may lead to a N-Determination in that course



# HENRY KENDALL HIGH SCHOOL SCHEDULE OF ASSESSMENT

## SPORT, LIFESTYLE & RECREATION

YEAR 11 COURSE 2023

Task number	Task 1	Task 2	Task 3	
Nature of task	<b>Games and Sports Applications</b> (Game Design and Instruction)	<b>Athletics</b> (Skill Analysis and Demonstration)	<b>Outdoor Recreation</b> (Travel Plan and Setup)	
Timing	Term 1, Week 9 2023	Term 2, Week 8 2023	Term 3, Week 6 2023	
Outcomes assessed	P1.1, P3.1, P3.2	P1.3, P2.1, P4.4	P1.4, P3.6, P4.1	
Components	Weighting %			
Knowledge and understanding	5%	15%	20%	40%
Skills	25%	25%	10%	60%
Total %	30%	40%	30%	100%

STUDENTS ARE REQUIRED TO APPLY THEMSELVES **WITH DUE DILIGENCE AND SUSTAINED EFFORT IN ALL AREAS OF COURSES.**  
Failure to do so will result in a N-Warning which may lead to a N-Determination in that course



# HENRY KENDALL HIGH SCHOOL SCHEDULE OF ASSESSMENT

## VISUAL ARTS

## YEAR 11 COURSE 2023

Task number	Task 1	Task 2	Task 3	
Nature of task	Practical Display and Written Submission	Practical Display and Written Submission	Final Course Exam and Display/VAPD	
Timing	Term 1, Week 10 2023	Term 2, Week 10 2023	Term 3, Weeks 9/10 2023	
Outcomes assessed	P1, P3, P9	P2, P4, P10	P5, P6, P7, P8,	
Components	Weighting %			
Art Criticism and Art History (50%)	10%	20%	20%	50%
Art making (50%)	15%	15%	20%	50%
Total %	25%	35%	40%	100%

STUDENTS ARE REQUIRED TO APPLY THEMSELVES WITH DUE DILIGENCE AND SUSTAINED EFFORT IN ALL AREAS OF COURSES.  
Failure to do so will result in a N-Warning which may lead to a N-Determination in that course.



## HENRY KENDALL HIGH SCHOOL SCHEDULE OF ASSESSMENT

### WORK STUDIES

### YEAR 11 COURSE 2023

Task number	Task 1	Task 2	Task 3	
Nature of task	Research Task Employer Expectations	Writing a Job Application	Role Play Scenario	
Timing	Term 1, Week 7 2023	Term 2, Week 8 2023	Term 3, Week 6 2023	
Outcomes assessed	1, 2	3, 4	5, 6	
Components	Weighting %			
Knowledge and understanding	10%	10%	10%	30%
Skills	20%	30%	20%	70%
Total %	30%	40%	30%	100%

STUDENTS ARE REQUIRED TO APPLY THEMSELVES WITH DUE DILIGENCE AND SUSTAINED EFFORT IN ALL AREAS OF COURSES.  
Failure to do so will result in a N-Warning which may lead to a N-Determination in that course.

### Pattern of Study Requirements Checklist for the 2023 Higher School Certificate

✓	<b>Do your students who complete the Higher School Certificate in 2023 meet the following pattern of study requirements?</b>
	At least 12 units of Year 11 courses and 10 units of HSC courses
	At least 2 units of a NESA Developed Course in English, (or 2 units of the Content Endorsed Course <i>English Studies</i> where schools are involved in the pilot study for the course), at both Year 11 and HSC level
	At least 4 courses – at both Year 11 and HSC level
	At least 6 units of NESA Developed Courses – at both Year 11 and HSC level
	At least 3 courses of 2 unit value or greater (NESA Developed and/or NESA Endorsed Courses) – at both Year 11 and HSC level
	A maximum of 6 Year 11 units and 6 HSC units from courses in Science [Ref: <i>ACE Manual</i> , Dec. 2005, Section 8.3.1.4, p.88]
	Met eligibility requirements for the English (ESL) course [Ref: <i>ACE Manual</i> , Dec. 2005, Section 8.2.2.1, p.84]
	Met eligibility requirements for Continuers courses in languages where there are Background Speakers courses. Relevant documentation has been completed and retained at the school.
	Met eligibility requirements for Beginners courses in languages. Relevant documentation has been completed and retained at the school.
	Met eligibility requirements for Heritage courses in languages. Relevant documentation has been completed and retained at the school.
	<b>All</b> students undertaking Year 11 or HSC courses in 2023, <b>except students undertaking only Stage 6 Life Skills courses</b> , are required to complete the <i>HSC: All My Own Work</i> program (or equivalent) prior to the school's submission of students' 2023 Year 11 and HSC course entries. (Students who are entered for Stage 6 NESA Endorsed Courses or NESA Developed VET courses must also meet this requirement. Completion of the <i>HSC: All My Own Work</i> program (or equivalent) is optional for students undertaking <b>only</b> Stage 6 Life Skills courses. Schools are encouraged to devise an appropriate equivalent of the <i>HSC: All My Own Work</i> program for students with special education needs as necessary.)
	NESA Endorsed Courses have current endorsement
	Students are not enrolled in any NESA Developed Course, Content Endorsed Course, TAFE Delivered VET HSC Course or NESA Endorsed Course combinations which are subject to NESA exclusions [For exclusions please see <i>ACE Manual</i> , Dec. 2005, Section 8.3, p.87-90, PLUS also check your school BEC decision letters or check for BEC decisions via <i>Schools Online</i> .] VET course exclusions are available on the NESA of Studies website under Vocational Education.
<b>REMINDERS</b>	
	Students seeking an ATAR (Australian Tertiary Admission Rank) in 2023 must complete at least 10 units of NESA Developed Courses for which there are formal examinations conducted by the NESA of Studies, including (a) at least 2 units of English, and (b) at least 8 units of Category A courses. Courses completed must include at least three NESA Developed Courses of 2 units or greater and at least four courses.  <b>NB: NESA Endorsed Courses and Content Endorsed Courses, including vocational Content Endorsed Courses and the Content Endorsed Course, <i>English Studies</i>, do not satisfy requirements for the ATAR.</b>
	Schools should note that additional Departmental curriculum requirements (e.g. sport, religious education, 25 hours of PD/H/PE etc) or conditions of enrolment at individual schools are not requirements for Higher School Certificate credentialling as determined by the NESA of Studies as the statutory Higher School Certificate credentialling authority.
	Schools will need to ensure that NESA requirements are met in cases of accumulation, acceleration, repeating, recognition of prior learning and in any cases of non-completion of course requirements [please refer to the <i>ACE Manual</i> , Dec. 2005, Section 8 for details].
	Students with special education needs can meet the requirements for the award of the Higher School Certificate by undertaking a combination of NESA Developed Courses, NESA Endorsed Courses and/or Stage 6 Life Skills Courses. Principals will be required to certify on the Year 11 and HSC entry forms that enrolment of a student in any Life Skills Courses for Stage 6 is the result of a planning process that addresses the student's transition from school to adult life [please refer to the <i>ACE Manual</i> , Dec. 2005 Section 7, p.73-77].

## **NESA REQUIREMENTS FOR HSC (ATTACHMENTS 1 & 2)**

### **REQUIREMENTS OF THE *EDUCATION ACT 1990* IN RELATION TO THE NSW HIGHER SCHOOL CERTIFICATE**

#### **Higher School Certificate – section 95**

Higher School Certificates are to be granted by the NESA of Studies to students who:

- (a) have been granted a School Certificate, or who have attained such other qualifications as the NESA considers satisfactory; and
- (b) have attended a government school, or registered non-government school to which a current certificate of accreditation applies, or school outside New South Wales recognised by the NESA, or a TAFE establishment within the meaning of the *Technical and Further Education Commission Act 1990*; and
- (c) have participated, to the NESA's satisfaction, in courses of study which have been determined under this Act as appropriate to be undertaken by candidates for the Higher School Certificate; and
- (d) have been accepted by the NESA as having satisfactorily completed those courses of study; and
- (e) have, to the NESA's satisfaction, undertaken the requisite examinations or other forms of assessment; and
- (f) have complied with any requirements prescribed by the regulations or any requirements imposed by the Minister or the NESA.

The NESA may refuse to grant a Higher School Certificate to a student whose attendance or application at school has been of such an unsatisfactory character that the grant of the certificate would not, in the opinion of the NESA, be justified.

#### **Curriculum for Higher School Certificate candidates – section 12**

The curriculum during Year 11 and Year 12 for students who are candidates for the Higher School Certificate must meet the following requirements:

- (a) courses of study of a general description, as determined by the Minister on the recommendation of the NESA, are to be provided for each student in each Year
- (b) those courses of study are to include a course of study in English
- (c) those courses of study are to comply with a pattern of study determined by the Minister on the recommendation of the NESA
- (d) those courses of study are to be taught in accordance with a syllabus developed or endorsed by the NESA and approved by the Minister.

These requirements are articulated in Attachment 2.

## BOOKLET ACKNOWLEDGEMENT

## YEAR 11 HSC ASSESSMENT BOOKLET ACKNOWLEDGEMENT



I \_\_\_\_\_, (*name printed*) have received the Henry Kendall High School assessment document for 2023.

I am aware of the requirements for each course, and I have noted in particular the sections relating to "**Late Work**", and the "**NESA's Policy on Non-Attempts**", as again outlined below.

Any assessment handed in **late** will be **checked diagnostically** but will receive **no marks** – it will be classified as a **NON-ATTEMPT OR NON-SERIOUS ATTEMPT**.

## NESA'S POLICY ON NON-ATTEMPTS/NON-SERIOUS ATTEMPT

A candidate receives zero marks for an assessment task:

- for non-completion of a task by the due date, or
- because of the standard of work that task will be considered to be a NON-ATTEMPT.

"When a candidate has been given zero marks (ie, NON-ATTEMPT) because of failure to complete assessment tasks totalling 50% or more of the final assessment marks, the Principal must certify that the course has not been studied satisfactorily."

In these circumstances the candidate may be ineligible for a Higher School Certificate.

NB Candidates and parents will be notified, in writing, when tasks are NON-ATTEMPTS, and when the "50% rule" is in danger of being breached.

\_\_\_\_\_ Signed (Student)

\_\_\_\_\_ Parent/Caregiver name

\_\_\_\_\_ Parent/Caregiver signature

Date \_\_\_\_ / \_\_\_\_ / \_\_\_\_

*(This page to be left in the booklet. A separate sheet enclosed is to be completed and returned to the DP Office)*

## ASSESSMENT CALENDAR

## YEAR 11 ASSESSMENT CALENDAR 2023

	Term 1 2023	Term 2 2023	Term 3 2023
<b>Week 1</b>		Drama	Drama
<b>Week 2</b>			Geography Primary Industries Agriculture - Cluster C
<b>Week 3</b>		Chemistry Software Design & Development	Chemistry Software Design & Development
<b>Week 4</b>			
<b>Week 5</b>		Engineering	English Studies Engineering Studies Industrial Technology - Timber PDHPE
<b>Week 6</b>	Retail Services - Cluster A	Retail Services - Cluster B	Retail Services - Cluster C Sport, Lifestyle & Recreation Work Studies
<b>Week 7</b>	Work Studies		
<b>Week 8</b>	Community & Family Studies Geography Hospitality Food & Beverage - Cluster A Mathematics Advanced Modern History Music 1	Ancient History Community & Family Studies English Advanced English Standard Legal Studies Music 1 Society & Culture Sport, Lifestyle & Recreation Work Studies	Hospitality Food & Beverage - Cluster C Society & Culture
<b>Week 9</b>	Ancient History Biology Business Studies Engineering Studies English Extension 1 Music 1 Physics Society & Culture Sport, Lifestyle & Recreation	Biology Mathematics Extension Modern History PDHPE Physics	<b>Final Course Examination</b>
<b>Week 10</b>	English Advanced English Standard English Studies Industrial Technology - Timber Legal Studies Mathematics Standard Mathematics Extension Music 1 PDHPE Primary Industries Agriculture - Cluster A Software Design & Development Visual Arts	Business Studies English Extension 1 Hospitality Food & Beverage – Cluster B Mathematics Advanced Mathematics Standard Primary Industries Agriculture - Cluster B Visual Arts	Hospitality - Cluster B Primary Industries Agriculture - Cluster D  <b>Final Course Examination</b>

## ASSESSMENT TASK CHECKLIST



## HENRY KENDALL HIGH SCHOOL

## STAGE 6 ASSESSMENT TASK CHECK LIST

***This checklist must be attached to the front of each Assessment Task and submitted to the Head Teacher prior to the task notification and the task distributed to students.***

☐ HSC ☐ Preliminary HSC ☐ VET

☐ Assessment notification is attached

☐ Task entered on SENTRAL by HT

Teacher: \_\_\_\_\_ Course: \_\_\_\_\_

Task Title: \_\_\_\_\_

Date submitted to Head Teacher: \_\_\_\_ / \_\_\_\_ / \_\_\_\_ Date of Task: \_\_\_\_\_

☐ In class task OR ☐ Due date task OR ☐ Formal Examination

**Section below to be completed by the Teacher (CT), Head Teacher (HT) and Deputy Principal (DP)**

	CT	HT	DP
Task aligns with the same task in the assessment book as distributed to students.			
Task aligns with the outcomes being assessed			
Outcomes being assessed align with those in the assessment book as distributed to students			
Weighting given to task is in accordance with those in the assessment book as distributed to students			
The date of the task allows for a minimum of two weeks' notice to students and does not fall within an 'assessment free' period			
Marking guidelines/criteria provide clear descriptions of the quality of response required to receive each mark			
Additional requirements/adjustments for students with special needs			

Head Teacher: \_\_\_\_\_ Date: \_\_\_\_\_

Deputy Principal: \_\_\_\_\_ Date: \_\_\_\_\_

***NB: No Preliminary HSC or HSC Assessment Task is to be printed or distributed until the Head Teacher and Deputy Principal has signed this authority to do so***

☐ Filed in HSC Monitoring Folder

Printing request (please tick appropriate boxes)

**Type & Print** ☐ **Print Only** ☐ Cover Sheet Yes ☐ No ☐ Multiple Choice Answer Sheet ☐

**No. of copies required (including spares):** \_\_\_\_\_ **No. of students sitting the exam:** \_\_\_\_\_


**Stationery requirements:** A4 ☐ A3 ☐ Other ☐ \_\_\_\_\_ Single sided ☐ Double sided ☐

**Special requirements for examination:**

\_\_\_\_\_  
**Stationery requirements (Year 11/12 only):**

\_\_\_\_\_  
(eg number of sheets of lined paper)

# ASSESSMENT TASK

<p style="text-align: center;">HENRY KENDALL HIGH SCHOOL – ASSESSMENT TASK</p> <p style="text-align: center;">(Name of Faculty)</p> <p style="text-align: center;">(Course name) – HSC COURSE 2023</p> <p>Module/Unit: (Synopsis)</p>			
Task Number: (eg, 1)	Weighting: (Task value)	Date/Timing: (eg, 21/06/23, Periods 4/5)	
<p>Submission Details:</p> <ul style="list-style-type: none"> <li>Task is to be submitted by 8.55am on the scheduled date</li> <li>Font size 12 and 1½ spacing</li> <li>Present task stapled and clearly identified with your name and student number.</li> </ul>			
<p>Contact (who do you speak to if you have any problems?):</p> <ul style="list-style-type: none"> <li>If you have any difficulties in completing this task please see your class teacher and head of the faculty.</li> <li>If you experience difficulties submitting the task on time for any reason please refer to the HKHS Assessment Policy and Schedule for information about your responsibilities and contact DP Curriculum.</li> </ul>			
<p>Outcomes to be Assessed (Syllabus outcomes being assessed by task)</p> <ul style="list-style-type: none"> <li></li> <li></li> <li></li> </ul>			
<p>Task Description (What you are to do)</p>			
<p>Resources/References Suggestions (Where you might find information – not the only sources)</p> <ul style="list-style-type: none"> <li></li> <li></li> </ul>			
<p>Assessment Criteria or Starting Ideas (What you should be thinking about)</p> <ul style="list-style-type: none"> <li></li> <li></li> <li></li> </ul>			

## HENRY KENDALL HIGH SCHOOL ASSESSMENT NOTIFICATION AND COMPLETION SHEET

Course: \_\_\_\_\_

Class: \_\_\_\_\_

Task Number: \_\_\_\_\_

Teacher: \_\_\_\_\_

Task Description: \_\_\_\_\_

Date Due: \_\_\_\_\_ Task Value: \_\_\_\_\_ Weighting: \_\_\_\_\_  
 \_\_\_\_\_ %

[illegible]

# CHANGE TO LISTED ASSESSMENT TASK DETAILS



## HENRY KENDALL HIGH SCHOOL

### NOTIFICATION OF CHANGE TO LISTED ASSESSMENT TASK DETAILS STAGE 6

Faculty: \_\_\_\_\_

Subject: \_\_\_\_\_

Course: \_\_\_\_\_

Teacher(s): \_\_\_\_\_

\_\_\_\_\_

\_\_\_\_\_

#### Details of change to listed Assessment Task details

\_\_\_\_\_

\_\_\_\_\_

\_\_\_\_\_

#### Reasons for change from listed Assessment Task details

\_\_\_\_\_

\_\_\_\_\_

\_\_\_\_\_

#### Student consent statement

The changes listed above do not disadvantage me and I have taken note of the new details.

Student Signatures (use back of sheet if more signatures are required)


Head Teachers Signature: \_\_\_\_\_

Deputy Principal (Curriculum) Signature: \_\_\_\_\_

[Copies to be kept by Deputy Principal (Curriculum) and Head Teacher]

**NB:** Have you completed the checklist over page?

Checklist to be completed before Deputy Principal (Curriculum) will approve change to listed Assessment Task details.

**For a change to the date Assessment Task:**

- ☐ HSC Assessment Schedule - *check to see what other tasks are due if date is changed.*
- ☐ Head Teachers of faculties affected by change of date notified. If clashes or overload of tasks occurs then 'task' may need to be 'rescheduled' to a more suitable date and/or time.
- ☐ Have all students been made aware of the changes to the Assessment Task and how it may affect 'other' Assessment tasks due?
- ☐ Have all students been issued with an amendment to the Assessment Task?
- ☐ Do all students accept the changes to the Assessment Task?

**For a change to the type of Assessment Task:**

- ☐ Are the outcomes and style of Assessment Task and weightings being assessed the same as the original Assessment Task? Yes/No
- ☐ Have all students been made aware of the changes to the Assessment Task and the reasons for the change?
- ☐ Have all students been issued with an amendment to the Assessment Task?
- ☐ Do all students accept the change of Assessment Task?

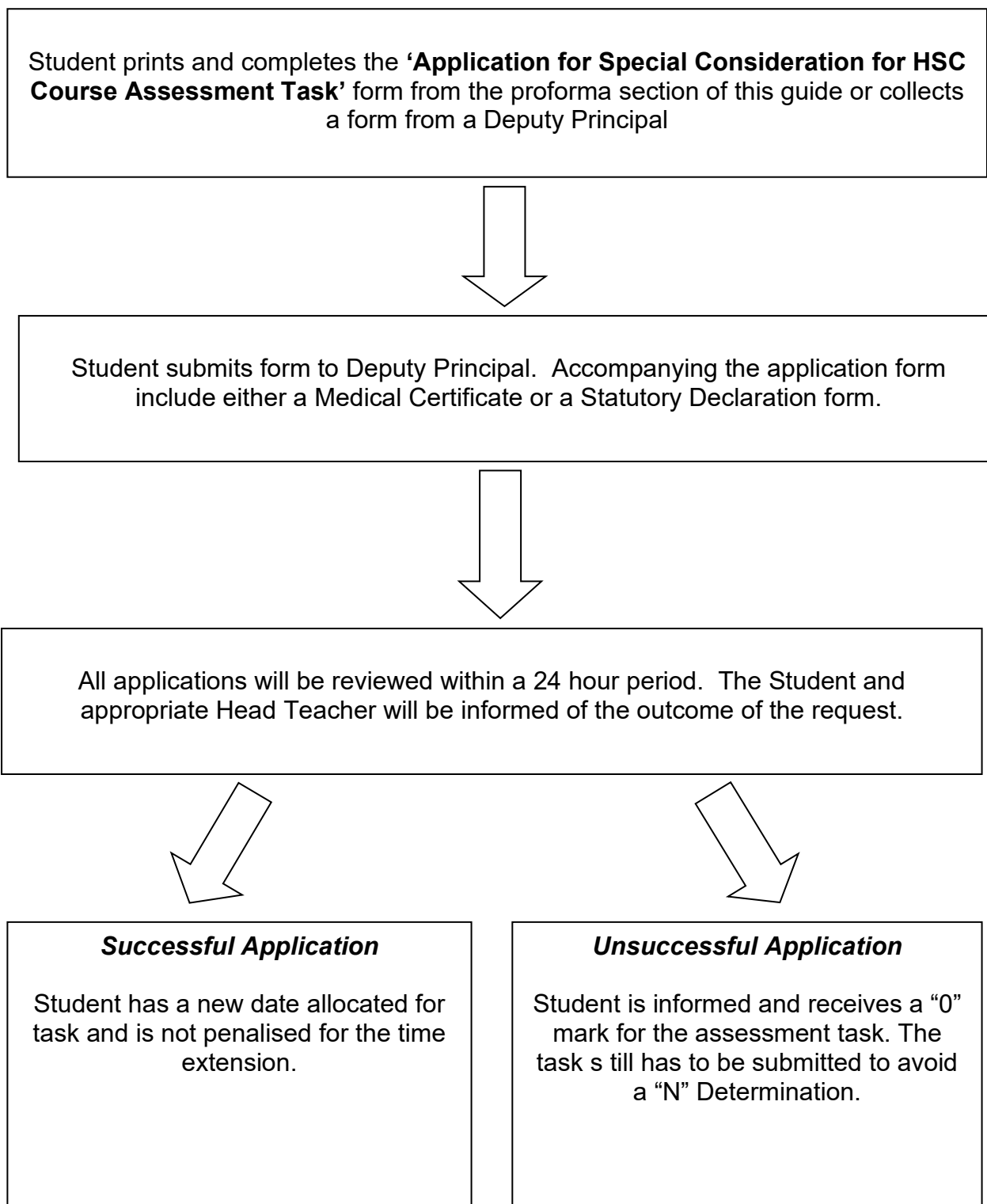
NB: Assessment Tasks should only be 'changed' if there is a valid reason for the change. Students have the right to expect the Assessment Schedule to be followed.

---

**Student Signatures (continued)**

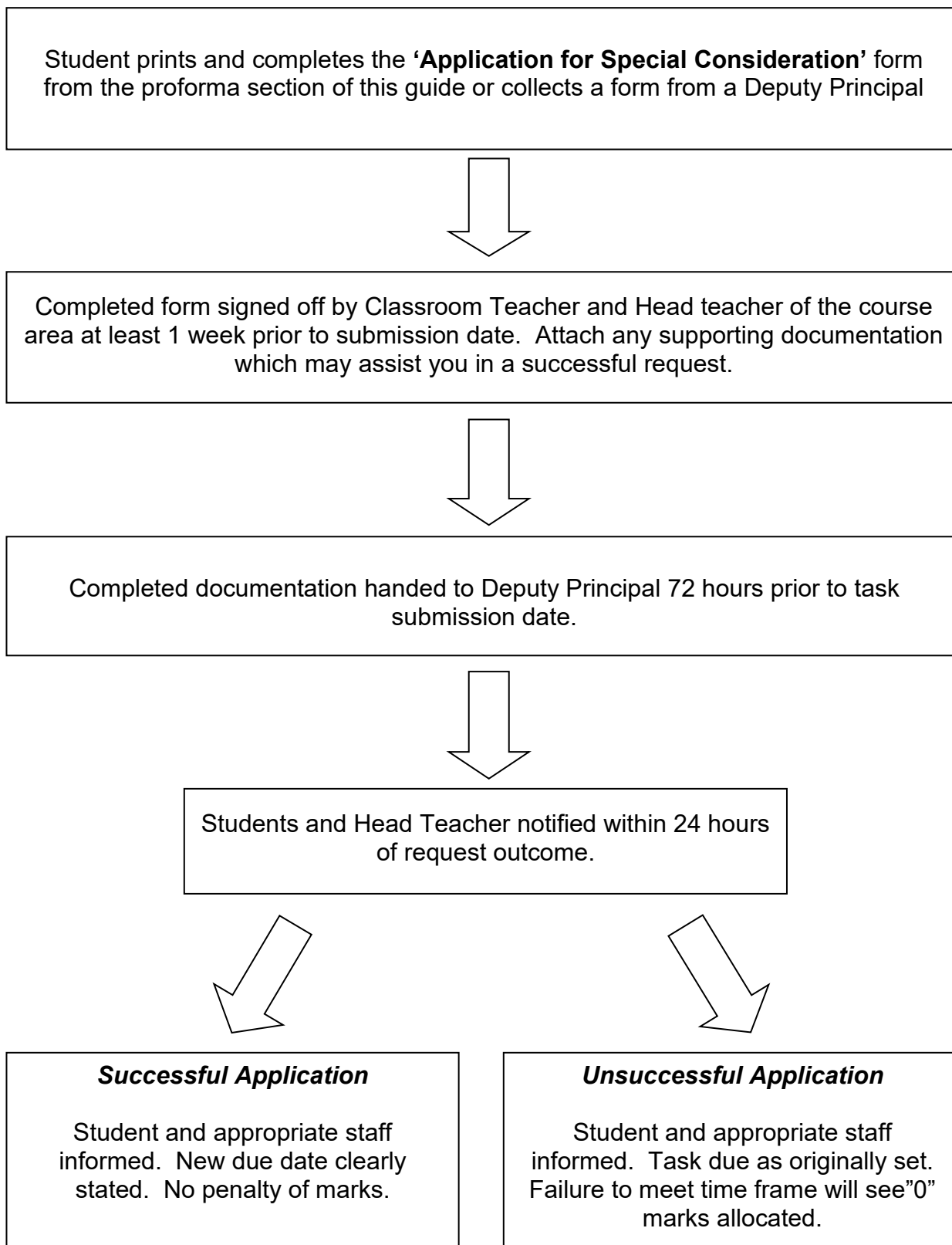

## MISSED ASSESSMENT TASK

### Missed Assessment Task Flow Chart



## EXTENSION OF ASSESSMENT TASK

### Process for Extension of Assessment Task



## APPLICATION FOR SPECIAL CONSIDERATION

### HENRY KENDALL HIGH SCHOOL

#### APPLICATION FOR SPECIAL CONSIDERATION FOR YEAR 11/ HSC COURSE

#### ASSESSMENT TASK

- Complete the following form with your teacher.
- Have teacher and HT of the course sign the form.
- Attach relevant documentation to form and hand in to DP for consideration.

STUDENT NAME: \_\_\_\_\_

DATE OF ASSESSMENT TASK: \_\_\_\_\_

COURSE: \_\_\_\_\_

TEACHER: \_\_\_\_\_

TASK NUMBER: \_\_\_\_\_

DESCRIPTION OF TASK:

---



---



---



---

REASON FOR EXTENSION:

(Documentary evidence from Parent/Doctor should be provided, except in exceptional circumstances)

☐ Excursion   ☐ Illness   ☐ Leave   ☐ Misadventure   ☐ Work placement   ☐ Other .....

☐ Medical Certificate   ☐ Parent Contact   ☐ Statutory Declaration   ☐ Other .....

In applying for this extension I assure the Principal that I am not seeking unfair advantage over other students in the course.

STUDENT'S SIGNATURE: \_\_\_\_\_ DATE: \_\_\_\_\_

1. I have noted the above request and HAVE/HAVE NOT granted an extension of time.

COMMENT (Optional): \_\_\_\_\_

EXTENSION TIME: \_\_\_\_\_ days   To be submitted on or before: \_\_\_\_\_

OR

2. MISSED ASSESSMENT TASK – NO VALID REASON

Task to be completed or submitted on or before \_\_\_\_\_

TEACHER: \_\_\_\_\_ HEAD TEACHER: \_\_\_\_\_ DATE: \_\_\_\_\_

DEPUTY PRINCIPAL (CURRICULUM): \_\_\_\_\_ DATE: \_\_\_\_\_

## EXAMPLE OF STATUTORY DECLARATION

### Commonwealth of Australia STATUTORY DECLARATION *Statutory Declarations Act 1959*

<sup>1</sup> Insert the  
name, address  
and occupation  
of person  
making the  
declaration

I,<sup>1</sup>

make the following declaration under the *Statutory Declarations Act 1959*:

<sup>2</sup> Set out matter  
declared to in  
numbered  
paragraphs

2

I understand that a person who intentionally makes a false statement in a statutory declaration is guilty of an offence under section 11 of the *Statutory Declarations Act 1959*, and I believe that the statements in this declaration are true in every particular.

<sup>3</sup> Signature of  
person making  
the declaration

3

<sup>4</sup> Place

<sup>5</sup> Day

<sup>6</sup> Month and year

Declared at <sup>4</sup>

on <sup>5</sup>

of <sup>6</sup>

Before me,

<sup>7</sup> Signature of  
person before  
whom the  
declaration is  
made (see  
over)

7

<sup>8</sup> Full name,  
qualification  
and address of  
person before  
whom the  
declaration is  
made (in  
printed letters)

8

*Note 1* A person who intentionally makes a false statement in a statutory declaration is guilty of an offence, the punishment for which is imprisonment for a term of 4 years — see section 11 of the *Statutory Declarations Act 1959*.

*Note 2* Chapter 2 of the *Criminal Code* applies to all offences against the *Statutory Declarations Act 1959* — see section 5A of the *Statutory Declarations Act 1959*.

## A statutory declaration under the *Statutory Declarations Act 1959* may be made before—

(1) a person who is currently licensed or registered under a law to practise in one of the following occupations:

Chiropractor	Dentist	Legal practitioner
Medical practitioner	Nurse	Optometrist
Patent attorney	Pharmacist	Physiotherapist
Psychologist	Trade marks attorney	Veterinary surgeon

(2) a person who is enrolled on the roll of the Supreme Court of a State or Territory, or the High Court of Australia, as a legal practitioner (however described); or

(3) a person who is in the following list:

Agent of the Australian Postal Corporation who is in charge of an office supplying postal services to the public  
Australian Consular Officer or Australian Diplomatic Officer (within the meaning of the *Consular Fees Act 1955*)  
Bailiff

Bank officer with 5 or more continuous years of service  
Building society officer with 5 or more years of continuous service  
Chief executive officer of a Commonwealth court  
Clerk of a court

Commissioner for Affidavits  
Commissioner for Declarations  
Credit union officer with 5 or more years of continuous service

Employee of the Australian Trade Commission who is:

- (a) in a country or place outside Australia; and
- (b) authorised under paragraph 3 (d) of the *Consular Fees Act 1955*; and
- (c) exercising his or her function in that place

Employee of the Commonwealth who is:

- (a) in a country or place outside Australia; and
- (b) authorised under paragraph 3 (c) of the *Consular Fees Act 1955*; and
- (c) exercising his or her function in that place

Fellow of the National Tax Accountants' Association

Finance company officer with 5 or more years of continuous service

Holder of a statutory office not specified in another item in this list

Judge of a court

Justice of the Peace

Magistrate

Marriage celebrant registered under Subdivision C of Division 1 of Part IV of the *Marriage Act 1961*

Master of a court

Member of Chartered Secretaries Australia

Member of Engineers Australia, other than at the grade of student

Member of the Association of Taxation and Management Accountants

Member of the Australasian Institute of Mining and Metallurgy

Member of the Australian Defence Force who is:

- (a) an officer; or
- (b) a non-commissioned officer within the meaning of the *Defence Force Discipline Act 1982* with 5 or more years of continuous service; or
- (c) a warrant officer within the meaning of that Act

Member of the Institute of Chartered Accountants in Australia, the Australian Society of Certified Practising Accountants or the National Institute of Accountants

Member of:

- (a) the Parliament of the Commonwealth; or
- (b) the Parliament of a State; or
- (c) a Territory legislature; or
- (d) a local government authority of a State or Territory

Minister of religion registered under Subdivision A of Division 1 of Part IV of the *Marriage Act 1961*

Notary public

Permanent employee of the Australian Postal Corporation with 5 or more years of continuous service who is employed in an office supplying postal services to the public

Permanent employee of:

- (a) the Commonwealth or a Commonwealth authority; or
- (b) a State or Territory or a State or Territory authority; or
- (c) a local government authority;

with 5 or more years of continuous service who is not specified in another item in this list

Person before whom a statutory declaration may be made under the law of the State or Territory in which the declaration is made

Police officer

Registrar, or Deputy Registrar, of a court

Senior Executive Service employee of:

- (a) the Commonwealth or a Commonwealth authority; or
- (b) a State or Territory or a State or Territory authority

Sheriff

Sheriff's officer

Teacher employed on a full-time basis at a school or tertiary education institution

## USE OF COMPUTER TECHNOLOGY GUIDELINES

### GUIDELINES FOR USING COMPUTER TECHNOLOGY FOR COMPLETING ASSESSMENT TASKS AND ASSIGNMENTS

Students at Henry Kendall High School are strongly encouraged to use computer technology to complete their assignments and assessment tasks.

Students should consider the following when completing assignments using computing technology:

***"ASSESSMENT TASKS must be the original work of the student concerned. Evidence of plagiarism or collusion between students will automatically lead to the task being classified as a non-attempt."***

The above is an extract from Henry Kendall High School's "Policy on Assessment Procedures". Examples of the above could include copying large amounts of information from the Internet or copying another student's work and changing only minor details. A bibliography at the end of the task should acknowledge all sources. An example of how to cite Internet sources is shown in student diaries.

The malfunction or unavailability of computing equipment cannot be used as a legitimate excuse for the late submission of work. To overcome possible problems students are encouraged to:

- 1) start assignments as early as possible;
- 2) save their files to more than one source, eg, USB thumb drive;
- 3) create and keep print-outs of their work during the process of completing the assignment to act as evidence of work previously completed;
- 4) keep an up-to-date process diary and/or log book (including problems experienced) as required by some courses such as Design and Technology, Industrial Technology and Computing courses;
- 5) be prepared to use non-computing methods if all else fails.

Students wishing to email their assignment to a teacher must gain permission from the teacher beforehand. It is important for students to realise that it is the teacher's final decision regarding the format that will be accepted for any task. If agreed to, the process of emailing a task must be completed 24 hours before the due date to allow the teacher to reply with a "Confirmation of Receiving Assessment Task" message.

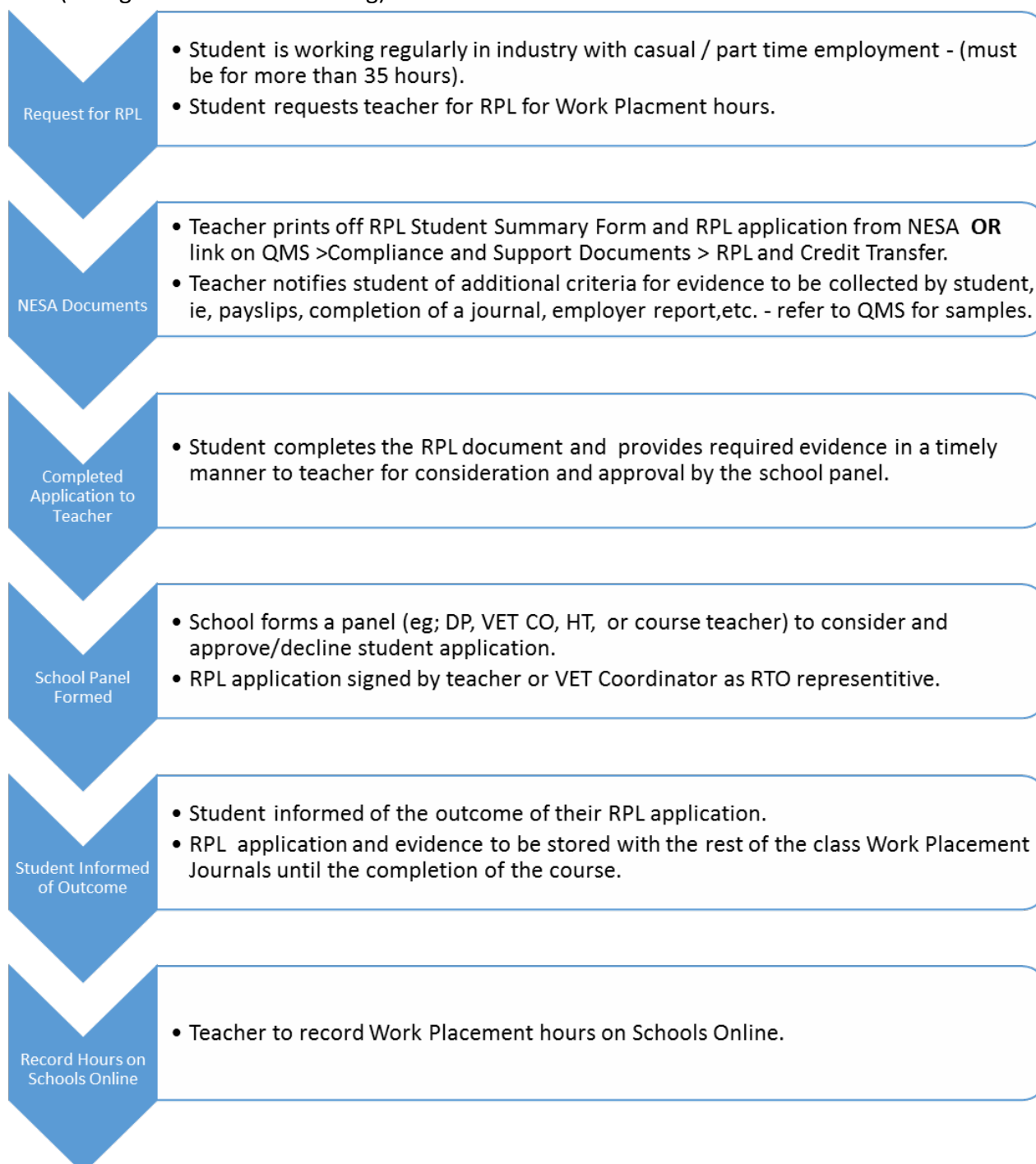
## VET RECOGNITION OF PRIOR LEARNING



Macquarie Park RTO 90222

## RPL Process

## RPL (Recognition of Prior Learning) for Work Placement



May 2018



**Application for RPL for Work Placement Hours**  
**Student Summary Form**

School: \_\_\_\_\_ Year \_\_\_\_\_  
Teacher \_\_\_\_\_

Student Surname	Student First name	ICF (Hosp, Retail etc)	RPL Number of Hours of work	Evidence Attached (✓)	Approved (sign)

Teacher: \_\_\_\_\_ Signature: \_\_\_\_\_ Date: \_\_\_\_\_  
VET Co-ordinator \_\_\_\_\_ Signature: \_\_\_\_\_ Date: \_\_\_\_\_

## Application for Recognition of Prior Learning (RPL) and/or Credit Transfer within Stage 5 or Stage 6 VET courses

This application has been developed to help schools, colleges and Registered Training Organisations (RTOs) to manage the determination of recognition of prior learning (RPL) and credit transfer within Stage 5 (Year 9 or 10) or Stage 6 (HSC) Vocational Education and Training (VET) courses.

The RTO involved in determining RPL/credit transfer must have the intended AQF VET qualification nominated in this application on their scope of registration.

Principals are delegated the authority to assess and approve applications for RPL or credit transfer for HSC VET course outcomes and content as defined by the indicative hour requirements for the HSC VET course and the mandatory work placement requirements.

Once processed, this application should be retained on record by the school or college and the RTO.

SECTION 1 Student, school/college and RTO details	
Student name:	
NESA student number:	
School year/grade:	
School/college:	
RTO responsible for VET course delivery and assessment: (see <a href="http://training.gov.au">http://training.gov.au</a> for RTO name and code)	

SECTION 2 VET course and AQF VET qualification details	
NESA course name:	
NESA course number:	
Pattern of study:	<input type="checkbox"/> Stage 5 100-hour elective <input type="checkbox"/> Stage 6 HSC indicative hours unit(s) x year(s)
Intended AQF VET qualification (code and title):	

### **SECTION 3      VET HSC exam (Industry Curriculum Framework 240/360-hour course only)**

Indicate whether the student intends to sit the HSC exam (optional) for the VET course:

- ☐ no
- ☐ yes      NESA exam number:

Calendar year the student will sit the exam:

**Note:** To be eligible to sit the HSC exam, students must meet the requirements of the respective HSC VET course from the syllabus that applies to the year that the HSC exam will be undertaken.

### **SECTION 4      Evidence for recognition of prior learning (RPL) and/or credit transfer**

It is the student's responsibility to provide evidence to the school or college and to the RTO for processing their request for RPL/credit transfer. Evidence must be submitted with this application (see below).

Examples of evidence for RPL include:

- ☐ course outlines, reports and result transcripts
- ☐ references from industry/employers
- ☐ outline of experiences including times/dates, places and contacts
- ☐ outline of skills and knowledge
- ☐ other

Forms of evidence for credit transfer are:

- ☐ AQF VET Certificate and Transcript of Competencies achieved
- ☐ AQF VET Statement of Attainment showing competencies achieved

### **SECTION 5      VET course requirements**

To gain credit towards the RoSA/HSC from the Stage 5/Stage 6 VET course, the student must meet ALL course requirements including:

- mandatory (Frameworks)/core (VET BECs) and elective units of competency to meet indicative hour requirements of the Stage 5/Stage 6 VET course
- HSC Content (Framework 240/360-hour course only)
- work placement requirements (where mandated).

These requirements may be met through RPL, credit transfer or further study as a part of the HSC program.

The RTO delivering the Stage 5/Stage 6 VET course is responsible for determining RPL or credit transfer for unit(s) of competency outcomes. This is to be done in accordance with the RTO's policies which comply with the VET Quality Framework, including standards for RTOs.

Refer to the HSC VET [Framework](#) syllabus or course description for the [Stage 5](#) / [Stage 6](#) VET BEC.

Section 5 (a) Units of competency to meet VET course indicative hour requirements	
This worksheet should be used to record details of how the course requirements for the Stage 5/ Stage 6 VET course will be addressed (either by RPL, credit transfer or through further study as a part of the RoSA/HSC program).	
NESA course name:	
Total indicative hours:	

Stage 5 / Stage 6 course requirements – unit(s) of competency			Course requirements will be met through: (insert the indicative hours in the relevant column)		
Unit code	Unit title	Indicative hours	RPL	credit transfer	further study
<b>Mandatory / core</b> List the mandatory/core units of competency to be included in the VET course – refer to the HSC VET <a href="#">Framework</a> syllabus or course description for the <a href="#">Stage 5</a> / <a href="#">Stage 6</a> VET BEC.					
Indicative hours sub-total					

<b>Stage 5 / Stage 6 course requirements – unit(s) of competency</b>			<b>Course requirements will be met through:</b> <i>(insert the indicative hours in the relevant column)</i>		
<b>Unit code</b>	<b>Unit title</b>	<b>Indicative hours</b>	<b>RPL</b>	<b>credit transfer</b>	<b>further study</b>
<b>Mandatory / core</b> <i>List the mandatory/core units of competency to be included in the VET course – refer to the HSC VET <u>Framework</u> syllabus or course description for the <u>Stage 5</u> / <u>Stage 6</u> VET BEC.</i>					
<b>Indicative hours sub-total</b>					

**Section 5 (b) HSC Content (Industry Curriculum Framework 240/360-hour course only)**

Where an associated unit of competency has been awarded through RPL or credit transfer, the RTO delivering the HSC course is responsible for determining any gaps in learning for the HSC Content (HSC focus areas) and for providing a program that enables the student to address the identified gaps. (Refer to Section 3 in the HSC VET [Framework](#) syllabus.)

The scope of learning for all mandatory focus areas and stream focus area (where applicable) has been covered :

☐ yes ☐ no (if no, provide details of gap program below)

**HSC Content gap program**

Outline the learning opportunities/program that will be provided to the student to enable them to address identified gaps:

**Section 5 (c) Work placement (where required)**

Mandatory work placement requirements for the VET course:	hours
Quantity of credit awarded by RPL:	hours
Gap to meet HSC course work placement requirements: (minimum work placement hours minus hours awarded by RPL)	hours

**Work placement gap planning**

Outline the planning to ensure that the student will be able to complete the remaining work placement requirements in accordance with the [Timetable of Actions for Secondary Schools](#):

**SECTION 6 HSC exam preparation and estimated exam mark (where relevant)**

It is the responsibility of the school or college/RTO delivering the HSC course to manage HSC exam preparation and determine an appropriate estimated exam mark for students who intend to undertake the VET course HSC exam and who have addressed the HSC focus areas (HSC Content) and been awarded RPL/credit transfer for the associated units of competency.

☐ A program to support the student's HSC exam preparation is available.

Outline the learning opportunities/program that will be provided to the student to support their HSC exam preparation:

☐ An appropriate procedure to determine an estimated exam mark for the student has been identified.

**SECTION 7 Student, school/college and RTO sign off**

The outcome of the application for RPL/credit transfer within the Stage 5/Stage 6 VET course as detailed above, and any programs identified to address gaps in the course requirements and/or HSC exam preparation (where relevant) have been agreed to by all parties involved.

Student's name:

Student's signature:

Date:

Principal's name:

Principal's signature:

Date:

RTO representative's name:

RTO representative's signature:

Date:

**School or College/RTO use only**

**Action**

Initial

Date

RPL/credit transfer determinations have been documented in Section 5(a) of this document.

RPL/credit transfer outcomes have been reported through Schools Online or the RTO's processes for TAFE NSW.

This application, along with the evidence for RPL/credit transfer as noted in Section 4, has been filed at the school/college or RTO.

## **Application for Recognition of Prior Learning (RPL) and/or Credit Transfer within Stage 5 or Stage 6 VET courses**

This application has been developed to help schools, colleges and Registered Training Organisations (RTOs) to manage the determination of recognition of prior learning (RPL) and credit transfer within Stage 5 (Year 9 or 10) or Stage 6 (HSC) Vocational Education and Training (VET) courses.

The RTO involved in determining RPL/credit transfer must have the intended AQF VET qualification nominated in this application on their scope of registration.

Principals are delegated the authority to assess and approve applications for RPL or credit transfer for HSC VET course outcomes and content as defined by the indicative hour requirements for the HSC VET course and the mandatory work placement requirements.

Once processed, this application should be retained on record by the school or college and the RTO.

<b>SECTION 1 Student, school/college and RTO details</b>	
Student name:	A Student / Class List (If a whole class)
NESA student number:	
School year/grade:	2021
School/college:	
RTO responsible for VET course delivery and assessment: (see <a href="http://training.gov.au">http://training.gov.au</a> for RTO name and code) Public Schools NSW Macquarie Park RTO 90222	

<b>SECTION 2 VET course and AQF VET qualification details</b>	
NESA course name:	Construction / Entertainment
NESA course number:	26201 / 26401
Pattern of study:	<input type="checkbox"/> Stage 5 100-hour elective <input checked="" type="checkbox"/> Stage 6 HSC indicative hours unit(s) x year(s)
Intended AQF VET qualification (code and title): Certificate II in Construction Pathways CPC20211 Statement of attainment CUA30413 Certificate III in Live Production and Services.	

### SECTION 3 VET HSC exam (Industry Curriculum Framework 240/360-hour course only)

Indicate whether the student intends to sit the HSC exam (optional) for the VET course:

☐ no

☐ yes      NESA exam number: **26299 Certificate II in Construction Pathways CPC20211**  
**26499 Statement of attainment CUA30413 Certificate III in Live Production and Services**  
 Calendar year the student will sit the exam: **2021**

Note: To be eligible to sit the HSC exam, students must meet the requirements of the respective HSC VET course from the syllabus that applies to the year that the HSC exam will be undertaken.

### SECTION 4 Evidence for recognition of prior learning (RPL) and/or credit transfer

It is the student's responsibility to provide evidence to the school or college and to the RTO for processing their request for RPL/credit transfer. Evidence must be submitted with this application (see below).

Examples of evidence for RPL include:

- ☐ course outlines, reports and result transcripts
- ☐ references from industry/employers
- ☐ outline of experiences including times/dates, places and contacts
- ☐ outline of skills and knowledge
- ☒ other **Safework NSW Whitecard**

Forms of evidence for credit transfer are:

- ☐ AQF VET Certificate and Transcript of Competencies achieved
- ☐ AQF VET Statement of Attainment showing competencies achieved

### SECTION 5 VET course requirements

To gain credit towards the RoSA/HSC from the Stage 5/Stage 6 VET course, the student must meet ALL course requirements including:

- a) mandatory (Frameworks)/core (VET BECs) and elective units of competency to meet indicative hour requirements of the Stage 5/Stage 6 VET course
- b) HSC Content (Framework 240/360-hour course only)
- c) work placement requirements (where mandated).

These requirements may be met through RPL, credit transfer or further study as a part of the HSC program.

The RTO delivering the Stage 5/Stage 6 VET course is responsible for determining RPL or credit transfer for unit(s) of competency outcomes. This is to be done in accordance with the RTO's policies which comply with the VET Quality Framework, including standards for RTOs.



Refer to the HSC VET [Framework](#) syllabus or course description for the [Stage 5](#) / [Stage 6](#) VET BEC.

### Section 5 (a) Units of competency to meet VET course indicative hour requirements

This worksheet should be used to record details of how the course requirements for the Stage 5/ Stage 6 VET course will be addressed (either by RPL, credit transfer or through further study as a part of the RoSA/HSC program).

NESA course name: **Certificate II in Construction Pathways CPC20211 or Statement of attainment CUA30413 Certificate III in Live Production and Services.**

Total indicative hours: **240**

Stage 5 / Stage 6 course requirements – unit(s) of competency			Course requirements will be met through: (insert the indicative hours in the relevant column)		
Unit code	Unit title	Indicative hours	RPL	credit transfer	further study
<b>Mandatory / core</b>					
List the mandatory/core units of competency to be included in the VET course – refer to the HSC VET <a href="#">Framework</a> syllabus or course description for the <a href="#">Stage 5</a> / <a href="#">Stage 6</a> VET BEC.					
CPCCWHS1001	Work safely in the Construction Industry	10		8	2

Stage 5 / Stage 6 course requirements – unit(s) of competency			Course requirements will be met through: (insert the indicative hours in the relevant column)		
Unit code	Unit title	Indicative hours	RPL	credit transfer	further study
Indicative hours sub-total		10		8	2

[illegible]

<b>Stage 5 / Stage 6 course requirements – unit(s) of competency</b>			<b>Course requirements will be met through:</b> <i>(insert the indicative hours in the relevant column)</i>		
<b>Unit code</b>	<b>Unit title</b>	<b>Indicative hours</b>	<b>RPL</b>	<b>credit transfer</b>	<b>further study</b>
<b>Indicative hours sub-total</b>					

**Section 5 (b) HSC Content (Industry Curriculum Framework 240/360-hour course only)**

Where an associated unit of competency has been awarded through RPL or credit transfer, the RTO delivering the HSC course is responsible for determining any gaps in learning for the HSC Content (HSC focus areas) and for providing a program that enables the student to address the identified gaps. (Refer to Section 3 in the HSC VET [Framework](#) syllabus.)

The scope of learning for all mandatory focus areas and stream focus area (where applicable) has been covered :

☐ yes ☐ no (if no, provide details of gap program below)

**HSC Content gap program**

Outline the learning opportunities/program that will be provided to the student to enable them to address identified gaps:

The student will study the HSC requirements for this unit in class with teacher instruction and class work to prepare for the HSC exam.

**Section 5 (c) Work placement (where required)**

Mandatory work placement requirements for the VET course:	hours
Quantity of credit awarded by RPL:	hours
Gap to meet HSC course work placement requirements: (minimum work placement hours minus hours awarded by RPL)	hours

**Work placement gap planning**

Outline the planning to ensure that the student will be able to complete the remaining work placement requirements in accordance with the [Timetable of Actions for Secondary Schools](#):



## SECTION 6 HSC exam preparation and estimated exam mark (where relevant)

It is the responsibility of the school or college/RTO delivering the HSC course to manage HSC exam preparation and determine an appropriate estimated exam mark for students who intend to undertake the VET course HSC exam and who have addressed the HSC focus areas (HSC Content) and been awarded RPL/credit transfer for the associated units of competency.

☐ A program to support the student's HSC exam preparation is available.

Outline the learning opportunities/program that will be provided to the student to support their HSC exam preparation:

Throughout timetabled class lessons under instruction from class teacher

☐ An appropriate procedure to determine an estimated exam mark for the student has been identified.

## SECTION 7 Student, school/college and RTO sign off

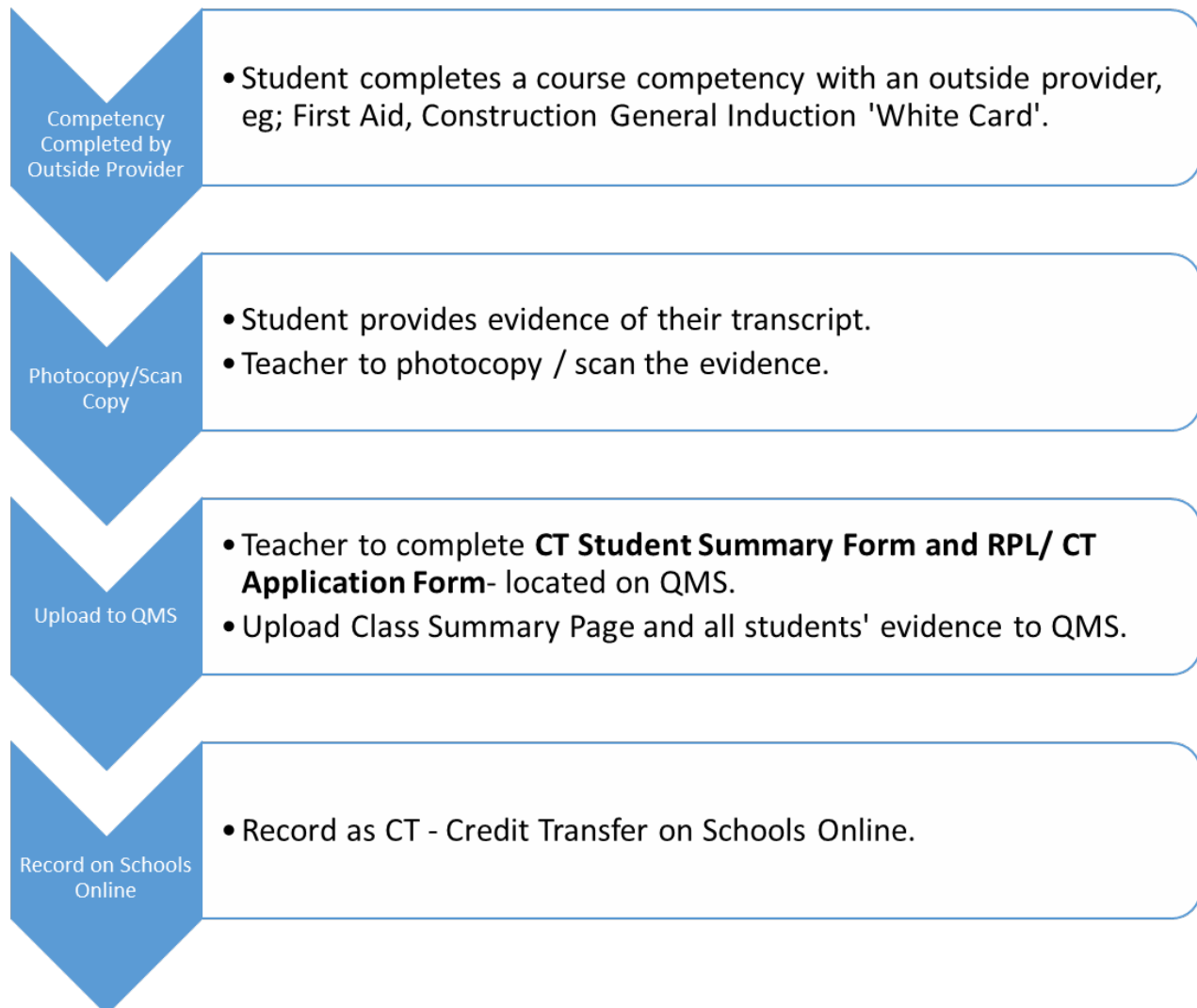
The outcome of the application for RPL/credit transfer within the Stage 5/Stage 6 VET course as detailed above, and any programs identified to address gaps in the course requirements and/or HSC exam preparation (where relevant) have been agreed to by all parties involved.

Student's name:	A Student	
Student's signature:	N/A	Date:
Principal's name:	Mrs Principal	
Principal's signature:		Date:
RTO representative's name:	VET Coordinator or Teacher	
RTO representative's signature:	VET Coordinator or Teacher	Date:

School or College/RTO use only		
Action	Initial	Date
RPL/credit transfer determinations have been documented in Section 5(a) of this document.	AA	9/5/18
RPL/credit transfer outcomes have been reported through Schools Online or the RTO's processes for TAFE NSW.	AA	9/5/18
This application, along with the evidence for RPL/credit transfer as noted in Section 4, has been filed at the school/college or RTO.	Yes AA	10/5/18

## CT Process

CT (Credit Transfer) for Whitecard, First Aid or other competencies achieved externally by outside providers



**Application for Credit Transfer Student Summary Form**

School: \_\_\_\_\_ Year \_\_\_\_\_  
Teacher \_\_\_\_\_

Student Surname	Student First name	ICF (Hosp, Retail etc)	Units of competency to be CT	Evidence Attached (✓)	Approved (sign)

Teacher: \_\_\_\_\_ Signature: \_\_\_\_\_ Date: \_\_\_\_\_  
VET Co-ordinator: \_\_\_\_\_ Signature: \_\_\_\_\_ Date: \_\_\_\_\_



Education

## VOCATIONAL EDUCATION AND TRAINING PUBLIC SCHOOLS NSW, MACQUARIE PARK RTO 90222

### Vocational Education and Training (VET) Courses

Public Schools NSW, Macquarie Park RTO 90222 is accredited as a Registered Training Organisation (RTO) to deliver and assess VET qualifications to secondary students.

By enrolling in a VET qualification in NSW Public Schools Macquarie Park RTO 90222, you are choosing to participate in a program of study that will give you the best possible direction towards a nationally recognised qualification. To receive the AQF VET qualification Certificate I, II or III, students must meet the assessment requirements of the Industry Training Package (<http://training.gov.au>).

Students will also be expected to complete all requirements relevant to the HSC and adhere to the requirements of NESA. When a student achieves a unit of competency it is signed off by a qualified assessor. To achieve the qualification students must be deemed competent in all units of competency.

Vocational Education and Training (VET) courses are offered as part of the Higher School Certificate (HSC) or Record of School Achievement (RoSA). VET courses are designed to deliver workplace-specific skills and knowledge and cover a wide range of careers and industries. VET courses for secondary students are developed by the NSW Educational Standards Authority (NESA) and are based on National Training packages.

VET courses allow students to gain both HSC or RoSA qualifications and a national qualification or a statement of attainment recognised throughout Australia as part of the Australian Qualification Framework (AQF). These qualifications are widely recognised by industry, employers and tertiary training providers and will assist students to move to various education and training sectors and employment.

There are two types of Stage 6 VET courses available to students:

1. **Board Developed VET courses** count towards the HSC or RoSA and are classified as Category B subjects. These courses have an optional HSC examination. Students wishing to include a VET course in the ATAR calculation must sit the HSC examination after they have completed a minimum of 4 x Preliminary and/or HSC units. ONLY ONE Board Developed VET course may contribute to the calculation of the Australian Tertiary Admission Rank (ATAR).

Board Developed VET courses have specified workplace requirement and include a minimum of 70 hours of **mandatory** industry specific **work placement** that may include up to 50% simulated workplace hours at school as specified by NESA.

2. **Board Endorsed VET Courses** count towards the HSC or RoSA but do not have an HSC examination and therefore do not count in the calculations of the ATAR. Many Board Endorsed VET Courses have mandatory industry specific work placement as specified by NESA.

Assessment in all VET courses is competency based. The student is assessed on what they can do (the skills) and what they know (the knowledge) that will equip them in the workplace. Students who have successfully achieved competency will have the skills and knowledge to complete workplace activities in a range of different situations and environments, to an industry standard of performance expected in the workplace.

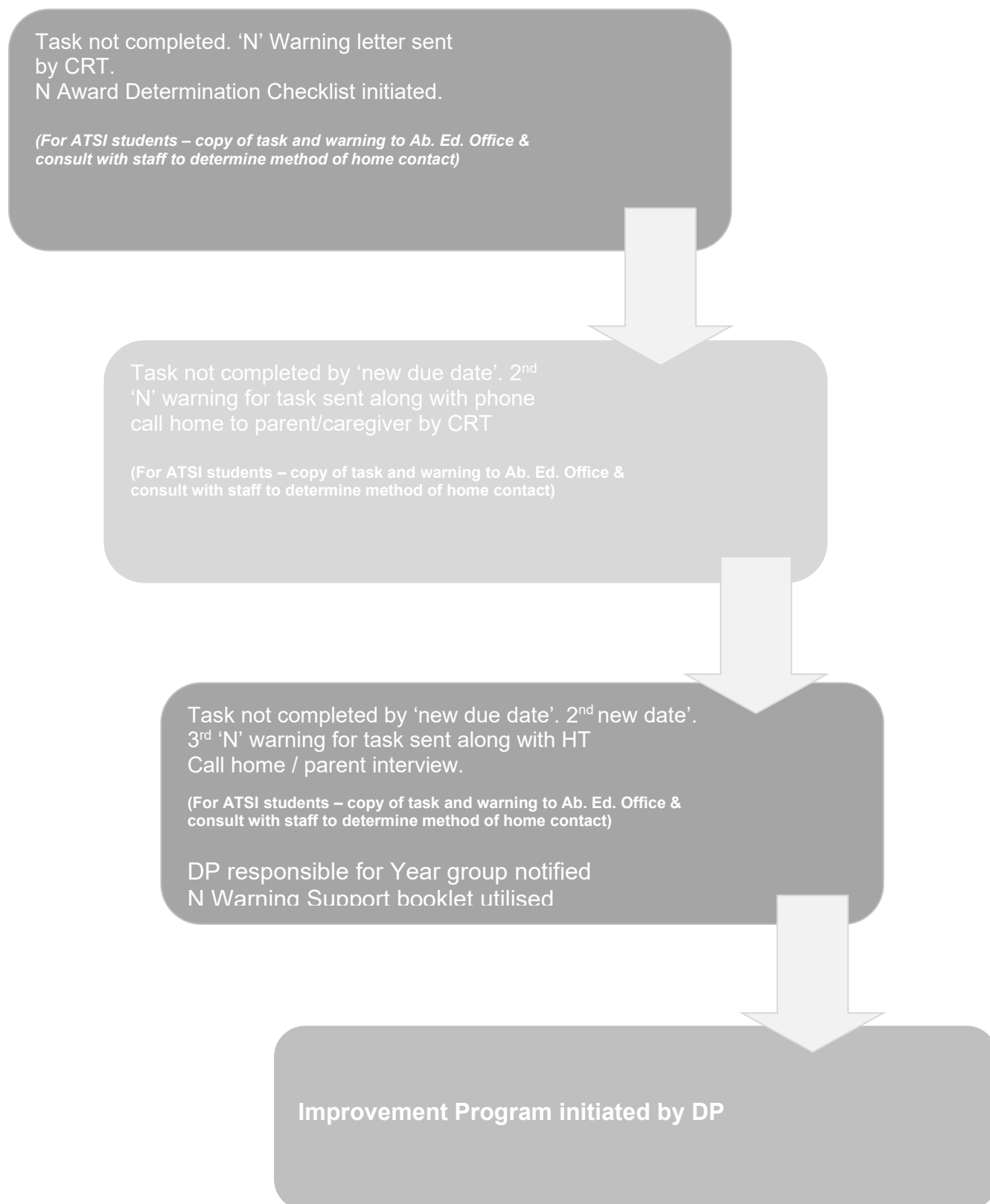
Competency-based assessment materials are designed to ensure each learner has achieved all the outcomes (skills and knowledge) to the level of the qualification. Competency-based training is based on performance standards that have been set by industry.

Students will receive documentation showing any competencies achieved for the VET course undertaken (Transcript).

Due to the specific requirements of a VET course it is recommended students speak to the VET Coordinator, VET Teacher or Careers Adviser before choosing the course to ensure they are fully aware of the requirements and that the course is suitable for their individual needs, knowledge and skills.

## Appendix M 'N' WARNING FLOWCHART

### 'N' Warning Flowchart



If at any point the task is completed to a satisfactory standard it is immediately resolved and this must be indicated in the students' electronic record.

**'N' AWARD WARNING LETTER****(Sample)****HENRY KENDALL HIGH SCHOOL**

Andrew Backhouse - Principal

Parent/Caregiver  
Address  
SUBURB NSW 2XXX

**N Award – Non Completion of a Preliminary Course**

Dear Parent/Caregiver

I am writing to advise you that *Student* in Year 11 is in danger of not meeting the course completion criteria for the Preliminary Higher School Certificate in *Subject*.

The NSW Education Standards Authority (NESA) requires schools to issue students with official warnings in order to give them the opportunity to redeem themselves. Please regard this letter as official warning number X we have issued concerning *Student* for *Subject*.

A minimum of two course-specific warnings must be issued prior to a final 'N' (non-completion) determination being made for a course.

**Course Completion Criteria**

Where it is determined that a student has not met the Course Completion Criteria, they place themselves at risk of receiving an 'N' (non-completion) determination. An 'N' determination will mean that the course will not be listed on the student's Record of Achievement. It may also mean that the student is unable to proceed to the Higher School Certificate course as *Student* has not satisfactorily complete the Preliminary Course.

The satisfactory completion of a course requires Principals to have sufficient evidence that the student has:

- Applied yourself with diligence and sustained effort to the set tasks and experiences provided in the course by the school
- Achieved some or all of the course outcomes

The table below lists those tasks, requirements or outcomes not yet completed or achieved, and/or for which a genuine attempt has not been made. In order for *Student* to satisfy the Course Completion Criteria, the following listed tasks, requirements, or outcomes need to be satisfactorily complete. Students who fail to rectify this N Warning in the nominated timeframe will be required to work on the task in the school library during their flexible attendance each Tuesday and Thursday from 1:00pm to 3:10pm until it is rectified (unless attending TAFE). A separate N Warning Rectification Detention Letter will be sent about this if it is required.

Yours sincerely

\_\_\_\_\_  
Teacher\_\_\_\_\_  
Head Teacher\_\_\_\_\_  
Deputy Principal

To satisfy the Course Completion Criteria, the following tasks, requirements or outcomes need to be satisfactorily completed by *Student*:

Task Name/Course Requirement/ Course Outcome	Date task initially due	Action Required by Student	Date to be completed by
Task	Date	Details	Date

**Requirements for the Satisfactory Completion of a Preliminary Course**

I have received the letter dated *date* indicating that *Student* is in danger of not having satisfactorily completing *Subject* (Year 11).

I am aware that the 'N' determination may make my child ineligible to proceed to the Higher School Certificate course.

I am also aware that this course may not appear on the Preliminary Course Record of Achievement.

**NB: I am aware that flexible attendance each Tuesday and Thursday will be withheld until this warning has been rectified.**

Parent/Guardian signature \_\_\_\_\_

Date \_\_\_\_\_

Student's signature \_\_\_\_\_

Date \_\_\_\_\_

## ACADEMIC IMPROVEMENT PROGRAM

# Academic Improvement Program

Your name is referred to a Deputy Principal for failure to meet NESA of Studies course requirements due to:

- misbehaviour/discipline issues resulting in placement on a behaviour level
- N Award warnings
- unsatisfactory attendance – below 90% (without acceptable justification)
- truancy from lessons/school including study periods
- non-compliance with school dress code
- failure to fulfil senior conditions

## Step 1

### PLACEMENT ON FORMAL IMPROVEMENT

- Interview by Deputy Principal or Principal
- Parents contacted by Deputy Principal
- Added to Millennium register and monitoring card issued

## Step 2

- UPL plan written in consultation with student and parent
- N Warning Support booklet implemented
- Student receives copy of UPL plan and plan submitted to relevant staff
- Deputy Principal monitors time frame for completion of UPL plan
- Principal signs off completion of UPL plan

## END

- All N Award Warnings have been successfully resolved
- Senior Enrolment Contract is being adhered to by students every day
- 95% attendance rate for all courses (from start of Improvement Program)

### IMPROVEMENT PROGRAM SUCCESSFULLY COMPLETED

### Consequences for Students who – are placed on or do not meet the requirements of – an Improvement Program:

- Year 12 students forfeit the use of their flexible leave
- Students over 17 years of age will be required to justify their continued enrolment
- Whilst on the improvement program students will not be eligible to represent the school in any extra-curricular activities
- Failure to bring suitable work will result in extra day being added to Improvement Program attendance
- Failure to attend all prescribed study sessions will result in a parental interview being conducted and a suspension warning will be issued (persistent failure to meet Improvement Program requirements will result in suspension)

**STUDENT APPEAL**

## Student Appeal Form

### Year 11 and HSC Courses

*This form should be completed only if the student feels that he/she has met the assessment criteria requirements as detailed in the assessment task, and is requesting a review of the assessment mark.*

*This form is to be completed and signed by student and parent.*

**Student Name:** \_\_\_\_\_

**Class:** \_\_\_\_\_

In lodging an appeal, you are asking the Deputy Principal (Curriculum) to reconsider the decision re assessment mark. The Deputy Principal (Curriculum), in consultation with your class teacher or the Head Teacher of the course, will review your performance in the course and give consideration to your statement in support of your appeal. The Deputy Principal (Curriculum) will decide whether there is sufficient evidence to change the original assessment mark.

**I wish to have the Deputy Principal (Curriculum) reconsider the decision re assessment mark in the following course:**

**Course Name**

**Course Number**

--	--

### **Student Statement in Support of Appeal**

You need to detail how you have completed all and/or assessment task requirements.

My appeal is based on the following grounds:

---



---



---



---



---

*(Additional pages may be stapled if more space is needed)*

The Deputy Principal (Curriculum) will advise you of the outcome of the School Review of your appeal within one week.

If the Deputy Principal (Curriculum) declines your appeal you may ask to have the matter reviewed by the Principal. The Principal will notify you of the outcome of your appeal. The Principal's decision is final.

Student's Signature \_\_\_\_\_ Date: \_\_\_\_\_

Parent/Caregiver's Signature \_\_\_\_\_ Date: \_\_\_\_\_

*(If student is under 18 years of age)*